

# Zoom on maple grading

3 grades available, 100% sourced from North America



**Regal (2/3)**



**Commercial (3/4)**



**Basic (4/4)**

	2	3	4
<b>Colour variation</b>	Sligth	Sligth	Slight
<b>Pin knots</b>	15 max.	20 max.	No limit
<b>Sound knots</b>	Ø 1 cm (6 max.)	Ø 1,5 cm (12 max.)	Ø 2 cm (16 max.)
<b>Open knots</b>	Not allowed	Ø 1 cm (6 max.)	Ø <1 cm no limit Ø 2 cm (8 max.)
<b>Mineral/Streaks</b>	Sligth	Sligth	No limit
<b>Bark</b>	Not allowed	2,5 x 0,3 cm (6 max.)	5 x 1 cm (10 max.)
<b>Worm tracks</b>	Sligth	Sligth	No limit
<b>Open splits</b>	0,20 x 20 cm ( 2 max.) Repaired	0,30 x 25 cm (4 max.) Repaired	0,5 x 30 cm (6 max.) Repaired
<b>Checks (open grain)</b>	Not allowed	Sligth	Slight
<b>Patching</b>	Not allowed	Not allowed	Not allowed

# Zoom on maple grading

## Quality 2

Full size  
veneer  
photos  
here!



Taking into account that these photos are for internal use, if shared with clients, they should be informed that the photos are intended to show the natural variability of the wood within the same quality grade, in the batches photographed.  
The different quality grades have a wide range of admissible defects; consequently, these photos do not imply any guarantee from Garnica that they are representative of other batches. They are simply examples of what might be found in each quality grade.

Taking into account that these photos are for internal use, if shared with clients, they should be informed that the photos are intended to show the natural variability of the wood within the same quality grade, in the batches photographed.  
The different quality grades have a wide range of admissible defects; consequently, these photos do not imply any guarantee from Garnica that they are representative of other batches. They are simply examples of what might be found in each quality grade.

Taking into account that these photos are for internal use, if shared with clients, they should be informed that the photos are intended to show the natural variability of the wood within the same quality grade, in the batches photographed.  
The different quality grades have a wide range of admissible defects; consequently, these photos do not imply any guarantee from Garnica that they are representative of other batches. They are simply examples of what might be found in each quality grade.

Taking into account that these photos are for internal use, if shared with clients, they should be informed that the photos are intended to show the natural variability of the wood within the same quality grade, in the batches photographed.  
The different quality grades have a wide range of admissible defects; consequently, these photos do not imply any guarantee from Garnica that they are representative of other batches. They are simply examples of what might be found in each quality grade.

Taking into account that these photos are for internal use, if shared with clients, they should be informed that the photos are intended to show the natural variability of the wood within the same quality grade, in the batches photographed.  
The different quality grades have a wide range of admissible defects; consequently, these photos do not imply any guarantee from Garnica that they are representative of other batches. They are simply examples of what might be found in each quality grade.

Taking into account that these photos are for internal use, if shared with clients, they should be informed that the photos are intended to show the natural variability of the wood within the same quality grade, in the batches photographed.  
The different quality grades have a wide range of admissible defects; consequently, these photos do not imply any guarantee from Garnica that they are representative of other batches. They are simply examples of what might be found in each quality grade.

# Zoom on maple grading

## Quality 3

Full size veneer photos here!



# Zoom on maple grading

## Quality 4

Full size veneer photos here!



Taking into account that these photos are for internal use. If shared with clients, they should be informed that the photos are intended to show the natural variability of the wood within the same quality grade, in the batches photographed.  
The different quality grades have a wide range of admissible defects; consequently, these photos do not imply any guarantee from Garnica that they are representative of other batches. They are simply examples of what might be found in each quality grade.



Taking into account that these photos are for internal use. If shared with clients, they should be informed that the photos are intended to show the natural variability of the wood within the same quality grade, in the batches photographed.  
The different quality grades have a wide range of admissible defects; consequently, these photos do not imply any guarantee from Garnica that they are representative of other batches. They are simply examples of what might be found in each quality grade.



Taking into account that these photos are for internal use. If shared with clients, they should be informed that the photos are intended to show the natural variability of the wood within the same quality grade, in the batches photographed.  
The different quality grades have a wide range of admissible defects; consequently, these photos do not imply any guarantee from Garnica that they are representative of other batches. They are simply examples of what might be found in each quality grade.



Taking into account that these photos are for internal use. If shared with clients, they should be informed that the photos are intended to show the natural variability of the wood within the same quality grade, in the batches photographed.  
The different quality grades have a wide range of admissible defects; consequently, these photos do not imply any guarantee from Garnica that they are representative of other batches. They are simply examples of what might be found in each quality grade.



Taking into account that these photos are for internal use. If shared with clients, they should be informed that the photos are intended to show the natural variability of the wood within the same quality grade, in the batches photographed.  
The different quality grades have a wide range of admissible defects; consequently, these photos do not imply any guarantee from Garnica that they are representative of other batches. They are simply examples of what might be found in each quality grade.



Taking into account that these photos are for internal use. If shared with clients, they should be informed that the photos are intended to show the natural variability of the wood within the same quality grade, in the batches photographed.  
The different quality grades have a wide range of admissible defects; consequently, these photos do not imply any guarantee from Garnica that they are representative of other batches. They are simply examples of what might be found in each quality grade.



# Zoom on maple grading

Detailed knots specifications



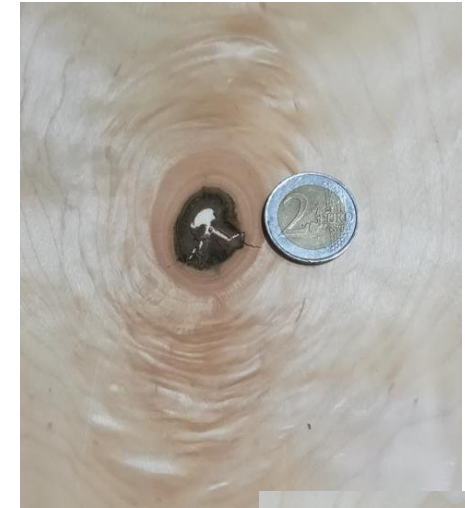
Pin knots



Sound knots



Barks



Open knots



# Zoom on maple grading

Detailed specifications on mineral/streaks/worm traks/open splits



Mineral/streaks



Worm traks



Open splits

