




# GARNICA ART



*20 artistic works that  
challenge the ordinary*

There is a history between wood and the human being that has always existed. Since the beginning of time, it has been one of the most desired materials in life: resistant, beautiful, versatile, majestic... directly from nature.

Wood is thus the origin of our past, present, and future. We are accustomed to seeing it represented in everyday things in our homes. But, can wood still be an artistic element?  
The answer is a resounding yes.

Festivals, museums, artists, and clients have played an important role in showcasing the various uses of plywood. Fortunately, more and more professionals are looking for materials for their projects that have a minimum impact on the environment, come from renewable sources, and serve to build a sustainable future.

With this book, we bring to light the architectural and artistic possibilities of plywood. The 20 works contained herein have formed part of various national and international exhibits and have had Garnica wood as the main material.

# summary



**ORIGAMI**  
page 05

**PRENDIENDO  
en bocas**  
page 12



**Lantern**  
page 45



**PICNIC**  
page 19



**STAIRWAY  
TO HEAVEN**  
page 52



**THE CLEARING**  
page 26



**DOUBLE BENCH**  
page 57

**PELL D'UN  
SOMNI**  
page 33



**el ciempiés**  
page 62





## 20 ARTISTIC WORKS THAT CHALLENGE THE ORDINARY



**HOME URBAN  
HOME**  
page 69

**RECASTING**  
page 76



**BUBBLE  
PAVILION**  
page 83



**LA FORÊT**  
page 90

**ARBRE**  
page 97



**NOLLA**  
page 104



**ARCOS**  
page 111

**BANQUÍN**  
page 118



**CHOPOS  
CON ARTE**  
page 125



**TABURETE  
TOWER**  
page 132







Manuel Bouzas Cavada  
Manuel Bouzas Barcala  
Clara Álvarez García

# ORIGAMI

## ORIGAMI





## PRECISE FOLDS FOR A SELF-SUPPORTING STRUCTURE

# ORIGAMI

Four doors provided access to the installation.



**Location:**  
Logroño, La Rioja, Spain



**Year:**  
2017



**Main material:** 39 Garnica plywood panels:  
25 for the structure, 10 for the flooring and 5 for support  
**Structure:** G-Brick with eucalyptus finish  
**Flooring:** Performance Poplar  
**Support:** Efficiency Poplar

The Japanese art of paper folding that transforms a simple sheet of paper into a small work of art without using scissors or glue is transmuted to wood, the raw material in this unique architectural proposal named *Origami*, which served as an information desk at the third edition of Concéntrico.

This self-supporting piece, which was on display at the Escuelas Trevijano Square in Logroño, demonstrated its constructive and structural viability, providing a new interpretation of the space and activity in the square.

By applying the precise folding technique using hinges, without incorporating any structure or substructure, architects Manuel Bouzas Cavada, Manuel Bouzas Barcala, and Clara Álvarez García created a unique and suggestive space open to its surroundings. With four entrance doors to provide a fully panorama from different angles, the perception of this work, as well as that of the host site, is transformed by both daylight and nighttime lighting, offering a variety of sensations.

This work served as an information desk in the third edition of Concéntrico.

"A singular and suggestive space open to its surroundings, with four entrance doors to provide a full panorama from different angles".



## ORIGAMI

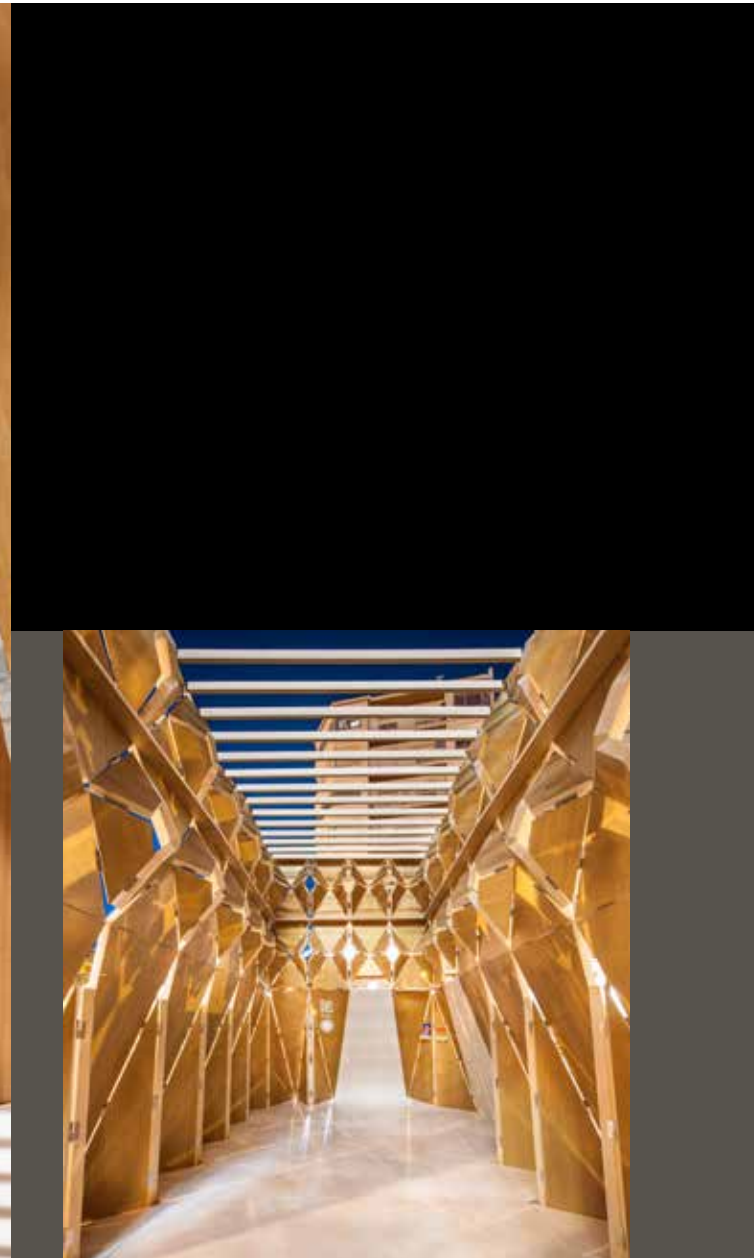
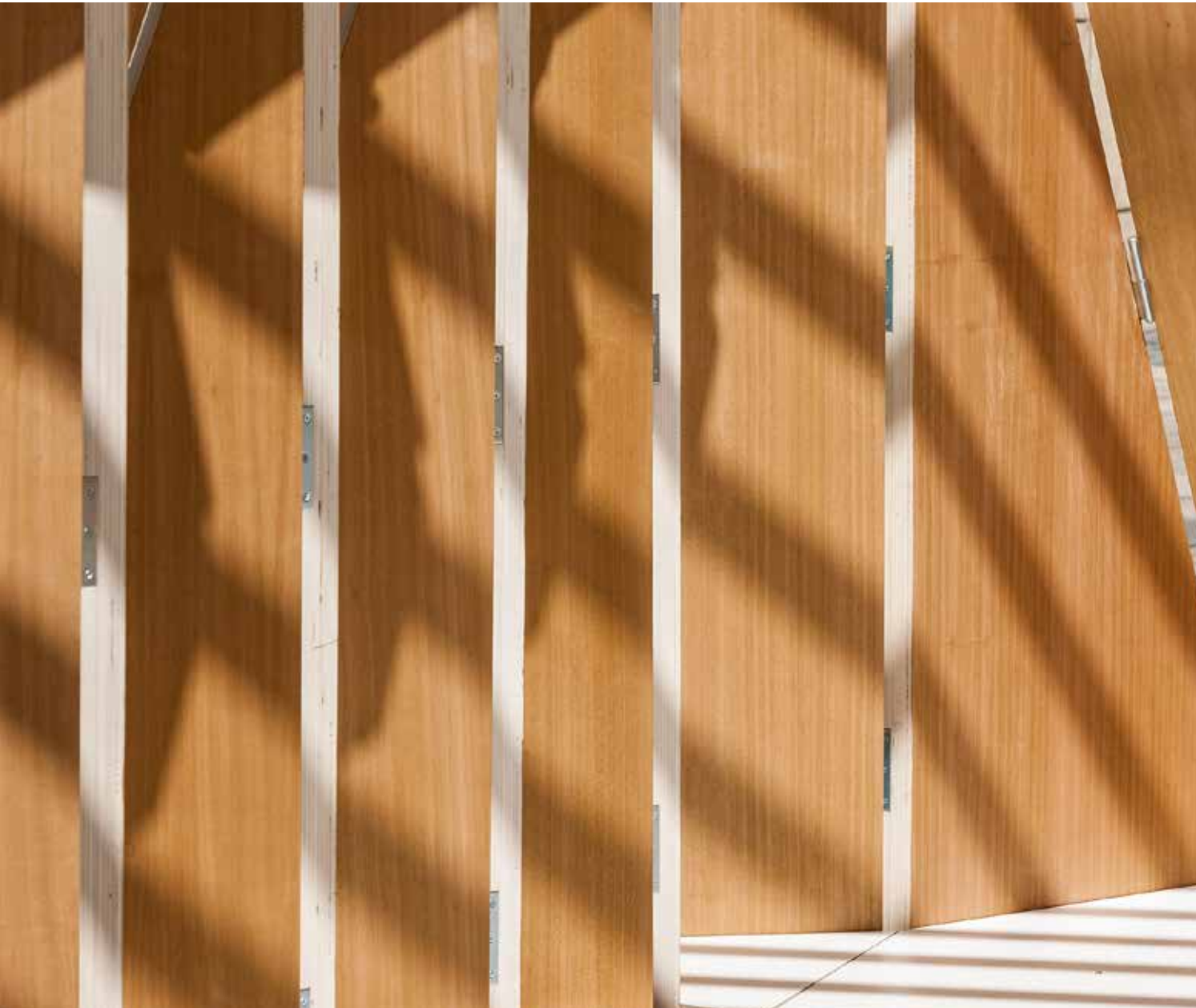








## ORIGAMI





# origami

Plywood panels and hinges were all that was needed for the creators to produce this unique work of art.



## CREATORS

### Manuel Bouzas Cavada

Over 25 years of experience in design, management, and administration of construction and urban planning projects. Consultant for projects and BIM implementation. Guest lecturer at university post-graduate programs.

### Manuel Bouzas Barcala

Graduate with honors from ETSAM. He received seven awards for his thesis project *Un Buen Suceso* (A Good Occurrence). He has conducted research at the Tokyo Institute of Technology and has worked with architecture studios like Aires Mateus and Atelier Bow-Wow.

### Clara Álvarez García

Graduate of ETSAM. Exchange student at Seoul National University. She works with ceramics and recycled glass in her personal craft.



Boa Mistura

# PRENDIENDO en Bocas

## PRENDIENDO EN BOCAS





A FOREST OF PRISMS THAT COMBINES GEOMETRY, COLOR, AND POETRY

Colors, words, and shapes are intertwined to shape a poetic space.

# PRENDIENDO en bocas

With the project *Laberintos líricos*, (Lyrical labyrinths), the group Boa Mistura employs verses of poetry to pay homage to the Spanish cities declared Cultural Heritage Sites. The piece titled *Prendiendo en bocas* (Burning in mouths) formed part of the first edition of *Concéntrico*.

The verse "Look at yourself through this poem of water," from *Poem 6* by Riojan poet Enrique Cabezón (Logroño, 1976), served as the basis of this work that breaks down the verse into four parts, each to be read from different specific positions while walking around the installation's perimeter.

Located in the San Bartolomé Square in Logroño, the work consists of ten painted triangular prisms on a grid of hexagons with four different perspectives. Depending on the observer's location, the view opens up to the city with a new perspective or a different arrangement of the display.

In the installation, each phrase from the verse is mixed with the others, thus producing different geometric and chromatic compositions.

The piece *Prendiendo en bocas* (Burning in mouths) formed part of the first edition of *Concéntrico*.

"The verse 'Look at yourself through this poem of water,' from *Poem 6* by Riojan poet Enrique Cabezón (Logroño, 1976), served as an inspiration for this work".



**Location:**  
Logroño, La Rioja, Spain



**Year:**  
2015



**Main material:**  
55 Duraply plywood panels

## PRENDIENDO en Bocas



The triangular prisms form a forest of words that are read differently from each of the various perspectives.







## PRENDIENDO EN BOCAS



With the *Laberintos líricos* (Lyrical labyrinths) project, Boa Mistura pays homage to the Spanish cities declared Cultural Heritage Sites, including Cuenca, Segovia, Ávila, and Toledo.

## PRENDIENDO EN BOCAS



### CREATORS

Boa Mistura is a group of artists founded in Madrid in 2001.

The members of Boa Mistura are:

**Javier Serrano Guerra**, architect graduated from ETSAG, with a specialization in landscape architecture from IUAV in Venice; **Juan Jaume Fernández**, Bachelor of Fine Arts from the Universidad Complutense in Madrid with a specialization in image arts from the Universität Der Künste in Berlin; **Pablo Ferreiro Mederos**, Bachelor of Fine Arts from the Universidad Complutense in Madrid with a specialization in graphic design from the Aalto School of Design in Helsinki; and **Pablo Purón Carrillo**, illustrator with a bachelor's degree in advertising and public relations from URJC in Madrid.





Takk

PICNIC

## PICNIC





A PLACE TO TAKE A BREAK ALONG THE WAY

This invention was designed to relate to the environment.

# PICNIC

As part of the third edition of the Concéntrico International Festival of Architecture and Design, Mireia Luzárraga and Alejandro Muño of the Takk architecture studio chose Viña Lanciano, the Bodegas LAN vineyard, as the location as the location for building this singular structure designed as a haven for socializing and recreation over a meal on the countryside: a picnic.

The work was entirely built from Garnica plywood, from the ground level platform to the bird feeders and bird baths that top it.

With this structure comprised of a "round bed" 5 meters in diameter and a foundation that rises from the ground to 6 meters of height, the design creates a space open to the wind, light, and vistas through a series of braided ropes that provide stability to the structure and offer cover using arrangements of native flowers and branches.

A space open to the wind, light, and vistas...

"This singular structure was designed as a haven for socializing and recreation over a meal on the countryside: a picnic".



**Location:**  
*Logroño, La Rioja, Spain*



**Year:**  
*2017*



**Main material:** 20 Garnica plywood panels:  
*8 Elegance Birch  
8 Elegance Globulus  
2 Efficiency Poplar  
2 Duraply*





## PICNIC









## PICNIC





# PICNIC

Made completely of Garnica plywood, the work is a refuge for humans and birds.



## CREATORS

### Takk

Together, **Mireia Luzárraga** and **Alejandro Muño** form Takk, an architecture studio based in Barcelona focused on developing projects at the intersection between nature and culture. Their work has received several recognitions, including the 2011 Fad Award and nomination for the 2014 Fad Award, and they have been nominated several times for the Arquia Próxima Award. Their work has been displayed, among other places, at CCCB, ARCOMadrid, MACBA, Las Cigarreras in Alicante, FAD Barcelona, and the Spanish Pavilion at the 2012 Venice Biennale. The founders of Takk are currently professors of projects at the University of Alicante and Master Tutors at IAAC.



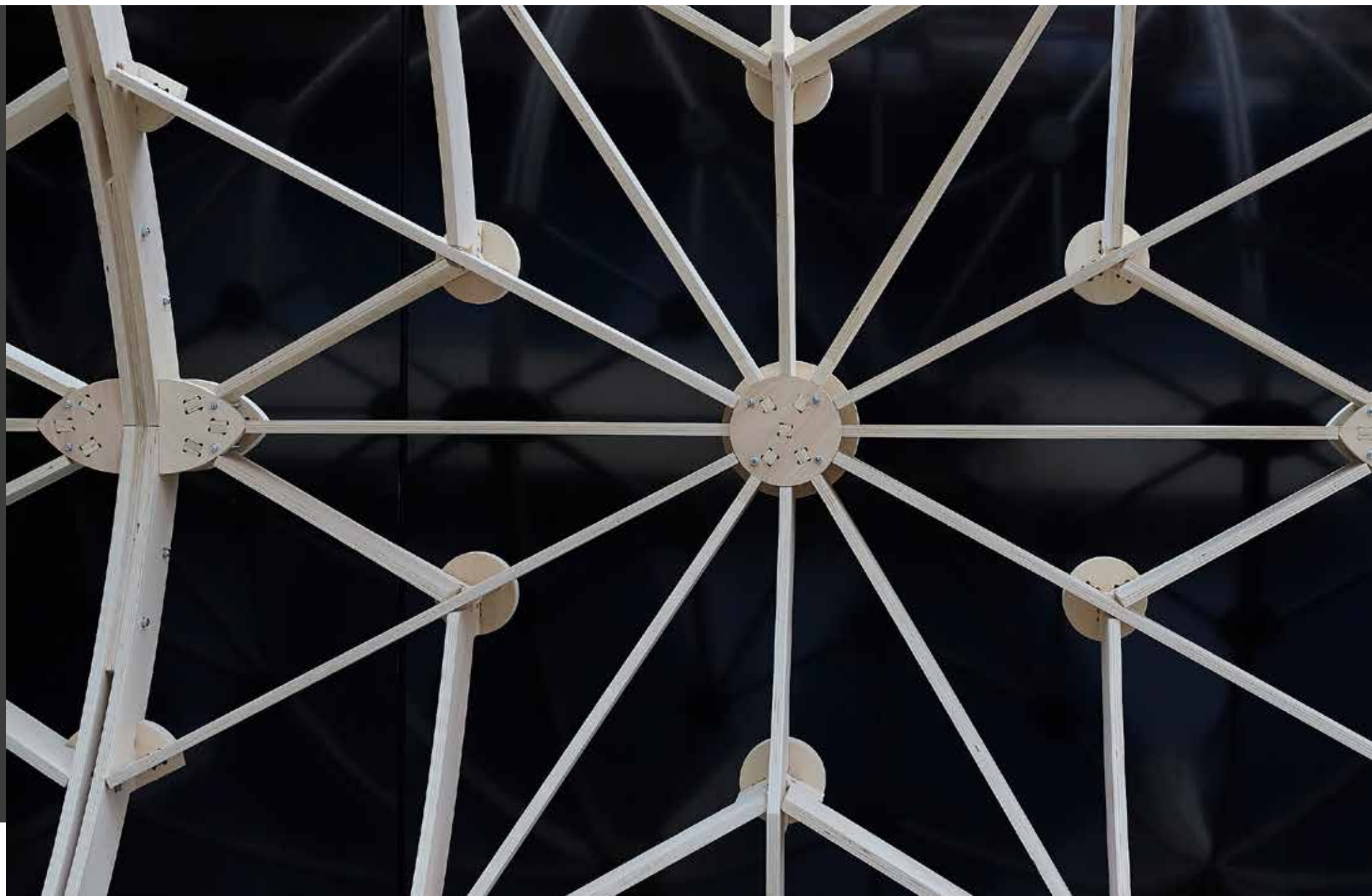


Ben Allen

# THE CLEARING



## THE CLEARING



A CLEARING IN A FOREST WITH GOTHIC SHAPES REACHING FOR THE SKY

An installation that connects to the Expressionist architecture of the early 20<sup>th</sup> Century.

# THE CLEARING



*The Clearing* is an intentionally immersive installation that was located at the headquarters of Creative Folkestone, an initiative intended to improve the creative activity of this English city in the County of Kent.

Inspired by Gothic structures that evoke forests, the artist designed this space that challenges the visitor to participate and submerge themselves in the space's sensorial multiplicity. The work also invites one to explore the feelings awoken by the tall, vertical, elusive shapes of these Gothic trees and the human inclination to meet in empty spaces, in the clearings of this forest that becomes infinite thanks to the play of mirrors.

The Gothic, tree-inspired shapes are of Anglo-French origin. For that reason, the artist felt that Folkestone was the ideal place for the installation, as it was likely a historical point of entry to the United Kingdom for the first master builders.

*The Clearing* also proposes a connection between Gothic architecture and Central European Expressionist architects from the early 20<sup>th</sup> Century, like Bruno Taut and Hans Poelzig.

**The Gothic, tree-inspired shapes are of Anglo-French origin.**

"The 'Gothic Cathedral' challenges the visitor to submerge themselves and meet in the clearing of this infinite sensory forest".



**Location:**  
Folkestone, UK



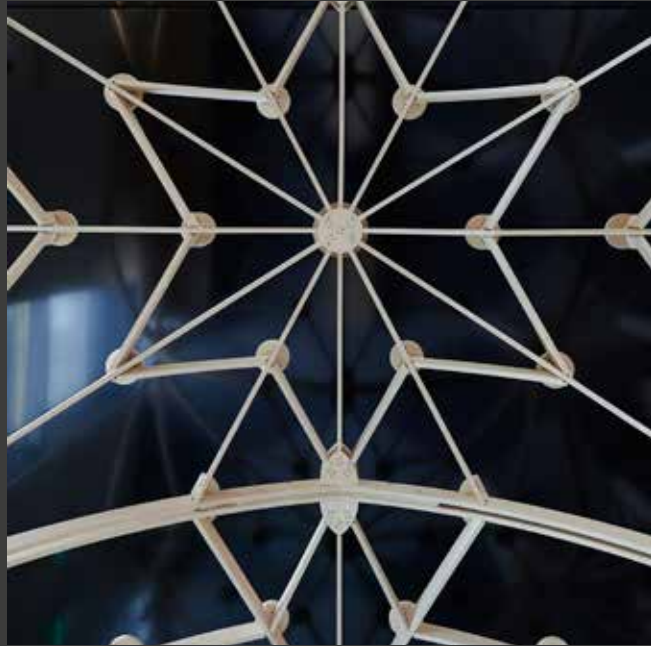
**Year:**  
2017



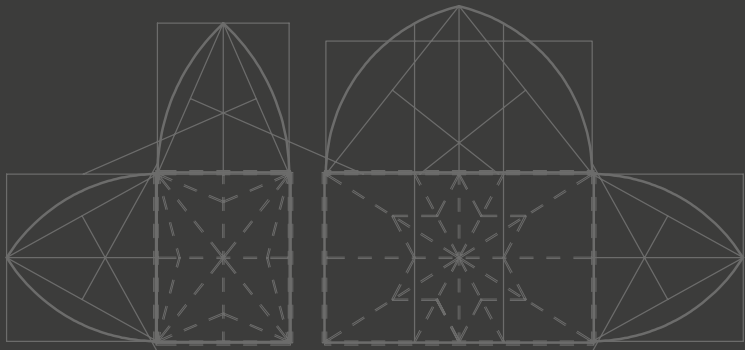
**Main material:**  
100 Fireshield Building plywood panels

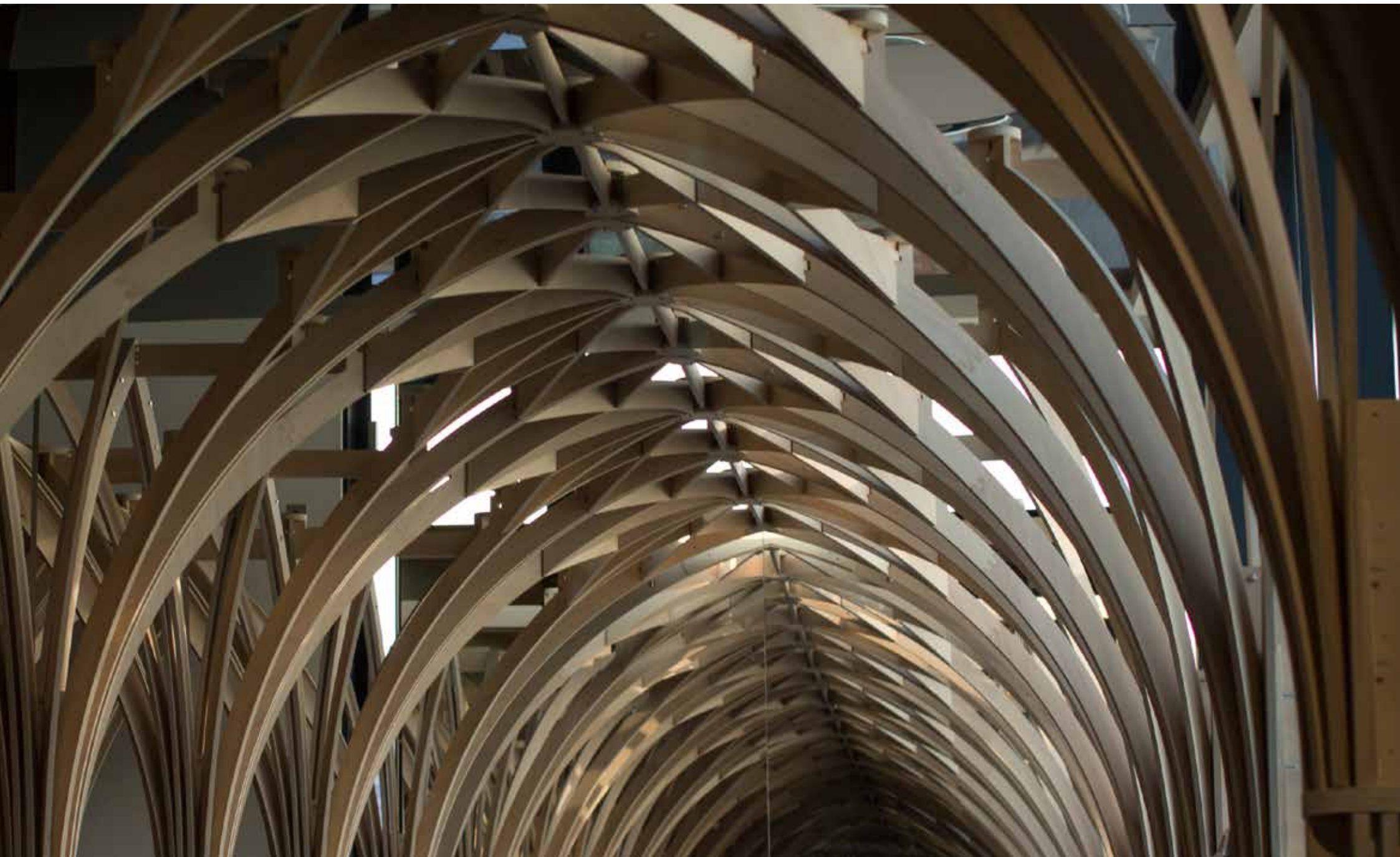


## THE CLEARING



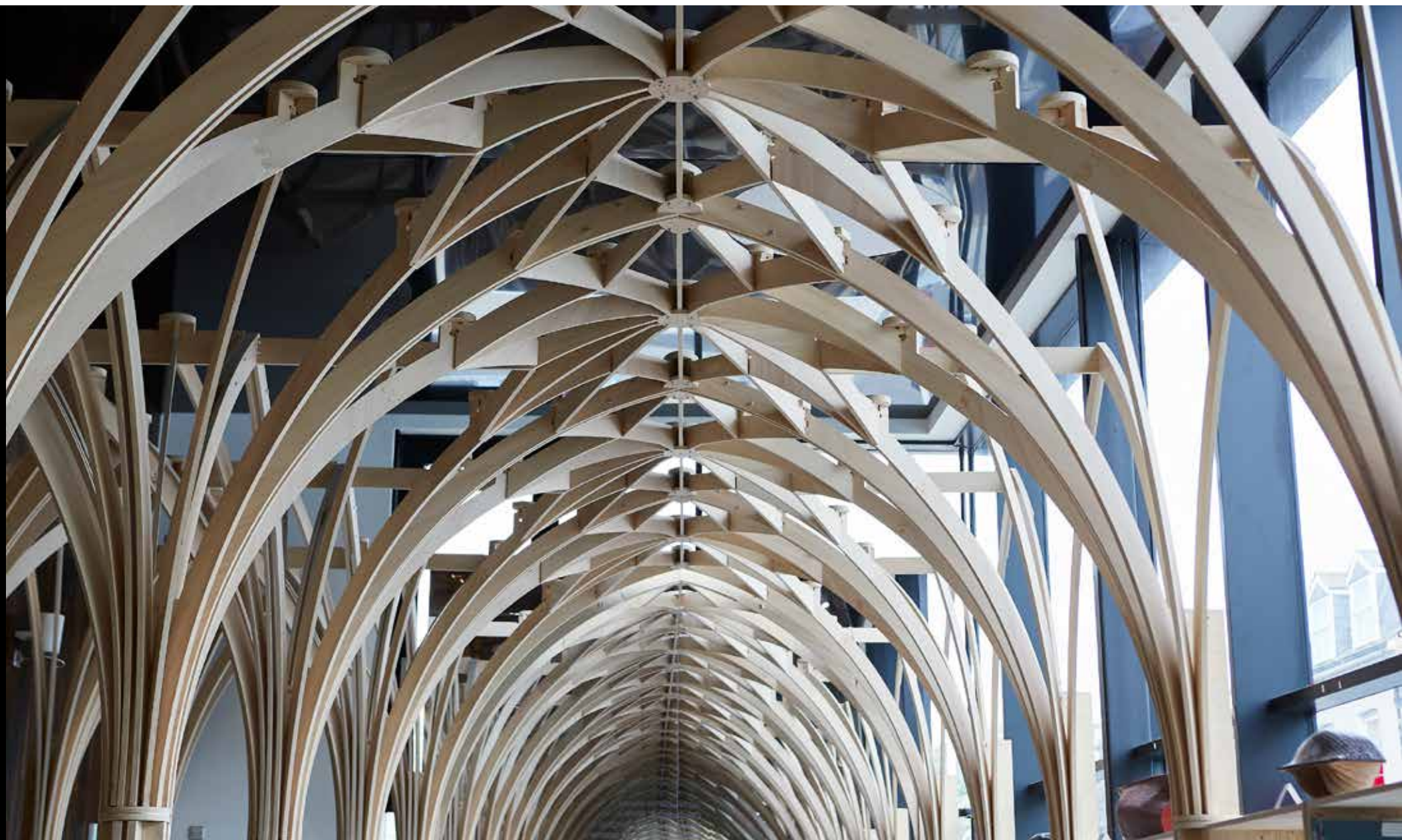
The shapes evoke those found in nature in a forest.







## THE CLEARING





# THE CLEARING

Ben Allen's installation at the Creative Folkestone headquarters challenges the visitor to live an immersive sensory experience.



## CREATOR

### Ben Allen

He studied in the Mackintosh School of Architecture and has participated in multiple projects, such as the National Concert Hall of Iceland in Reykjavik, which won the Mies van der Rohe European Union Architecture Prize in 2013-2014. He founded Studio Ben Allen in 2014, from where he approaches design in a multi-disciplinary manner, operating at the intersection of architecture, design, and art. He is specialized in the creation of unique spatial sequences through a bidirectional and open dialog between participants and the disciplines from concept to production.







Enric Pladevall

# PELL D'UN SOMNI

# PELL D'UN SOMNI





AN ALLIANCE BETWEEN TECHNOLOGY AND ART GIVES LIFE TO AN IDEA

The machinability of Garnica's panels made this work possible.

# PELL D'UN SOMNI

Catalan sculptor Enric Pladevall started to explore the idea for *Pell d'un Somni* or *Piel de un sueño* (The skin of a dream), originally titled *Fantasma* (Ghost), in the late 1990s.

However, it was not until 2014 when he started to build it, thanks to the evolution of computer design programs and the possibility of using a material like Garnica's poplar plywood.

The artist selected these panels "for their great stability, their ability to keep the same thickness throughout the surface, and the exceptional reliability of stretches and alterations," he said. In addition, the chromatic uniformity of the poplar panels allowed him to "coat the entire surface with gesso and acrylic paint, accentuating this ethereal nature to the utmost."

The idea behind the work is simple: "the appearance of a ghost, a white sheet that embraces the observer with one longitudinal eye that lets light pass through," explained Pladevall.

The idea behind *Pell d'un Somni* was born in the late 1990s.

The artist selected these panels "for their great stability, their ability to keep the same thickness throughout the surface, and the exceptional reliability of stretches and alterations".



**Location:**  
Ventalló, Girona, Spain



**Year:**  
2015



**Main material:**  
15 Efficiency Poplar plywood panels

## PELL D'UN SOMNI



Advances in design technology and treatment of the wood were key in creating the work.



# PELL D'UN SOMNI

A 2D numerical control machine cut and drilled each one of the pieces in order to later be able to assemble the puzzle with the help of wooden pegs.



## CREATOR

### Enric Pladevall

Sculptor Born in Vic, Catalonia, in 1951. His works are in public enclaves around the world. In addition, his sculptures are part of various museum and private collections, such as the Museum of Contemporary Art in Barcelona, the Museum of Contemporary Art in Madrid, the Juan March Foundation, the Lehigh University Art Gallery in Pennsylvania, the Atlanta History Center, and the Urban Redevelopment Authority Collection in Singapore. He is the architect of the Fundació l'Olivar, a garden of sculptures surrounded by hundred-year-old olive trees and cypresses typical of the Empordà landscape.



Davide Marchetti + Noumena

# OTRaVISIÓN



**OTRAVISIÓN**



THE CONVERGENCE BETWEEN OLD AND NEW

# OTRA VISIÓN

Visitors could access the tower through a small and narrow hallway.



Located in the Revellín Wall Square in the Riojan capital, this installation made with strips of Garnica poplar plywood emulates the arch of the entrance portico to the San Bartolomé Church, the oldest in the city of Logroño and one of the most beloved. From its highest point, it offers an elevated view of the square and the area surrounding Revellín.

The goal of this pavilion-tower is to provide passersby a different and unexpected perspective of the square. With access up to the highest point, this ephemeral construction has its entrance point through a narrow corridor that opens to the square, and visitors can observe the surrounding space through wooden profiles as they moved forward.

The space served to host the *Rutas* virtual reality experience, developed by Noumena, which acted as a "virtual periscope" for individual use, encouraging users to personally reflect on the space. Given that each person's point of view is artificially elevated by the virtual optics tool, the individual develops a unique relationship with the convergence between the old and the new in the city of Logroño.

The structure evokes the history of Logroño as a fortified city, taking advantage of the openings and decorations in the facades to create a sculptural pattern that modulates the incoming light.

"This installation made with strips of Garnica poplar plywood emulates the arch of the entrance portico to the San Bartolomé Church, the oldest in the city of Logroño and one of the most beloved".



**Location:**  
Logroño, La Rioja, Spain



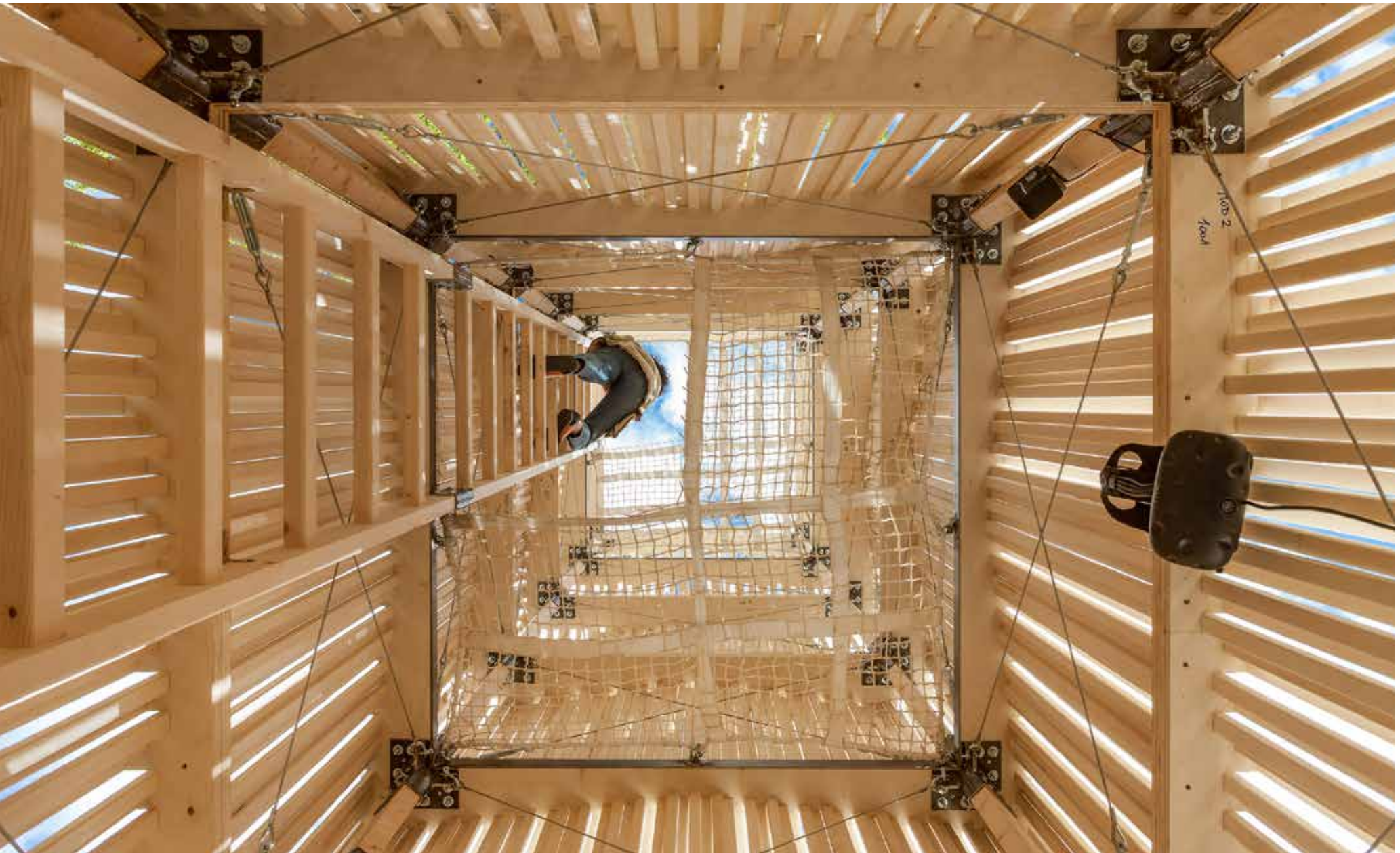
**Year:**  
2018



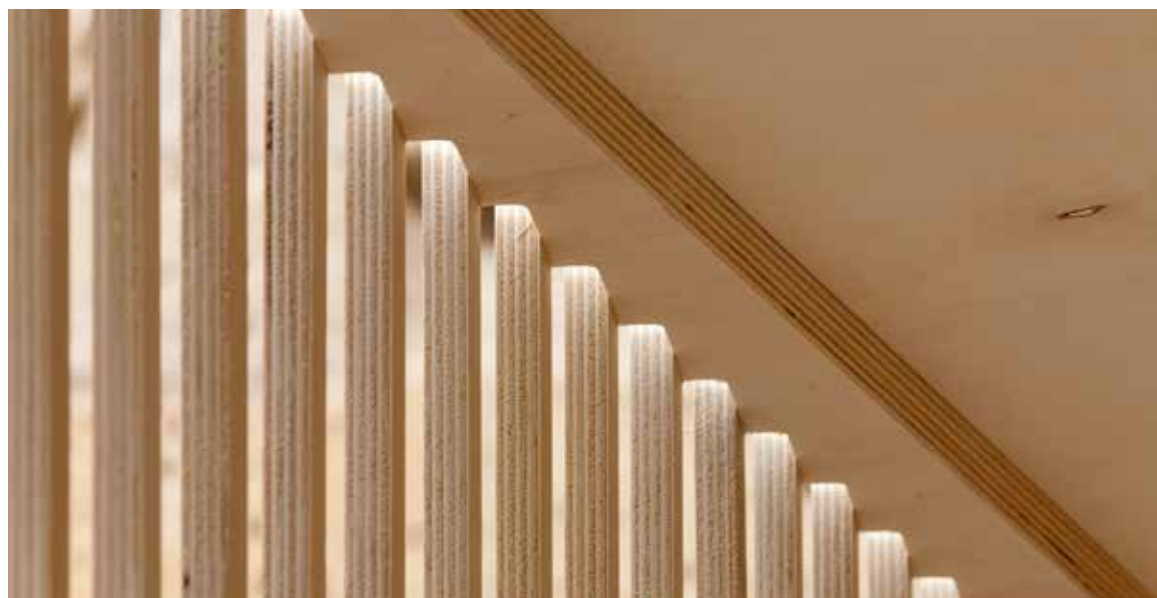
**Main material:**  
30 Efficiency Poplar plywood panels



## OTRA VISIÓN









## OTRA VISIÓN



# OTRAVISIÓN

The *Rutas* virtual reality experience acted as a "virtual periscope," encouraging visitors to reflect on the old and the new in the city.



## CREATORS

### Davide Marchetti with Noumena

**Davide Marchetti**, master in Architecture from the University of Roma in 2001, founded his own studio in 2005 and specializes in architecture, urban planning, and interior design. His work has been shown twice at the Venice Biennale of Architecture and the Heide Museum in Melbourne. He has been a professor at Cornell University and a guest critic at the Pratt Institute, Syracuse University, Waterloo University, and Washington University.

Headquartered in Barcelona and with branches in Austria, India and Italy, **Noumena** studio is focused on implementing innovative solutions for construction, fashion design, robotics, and smart cities.

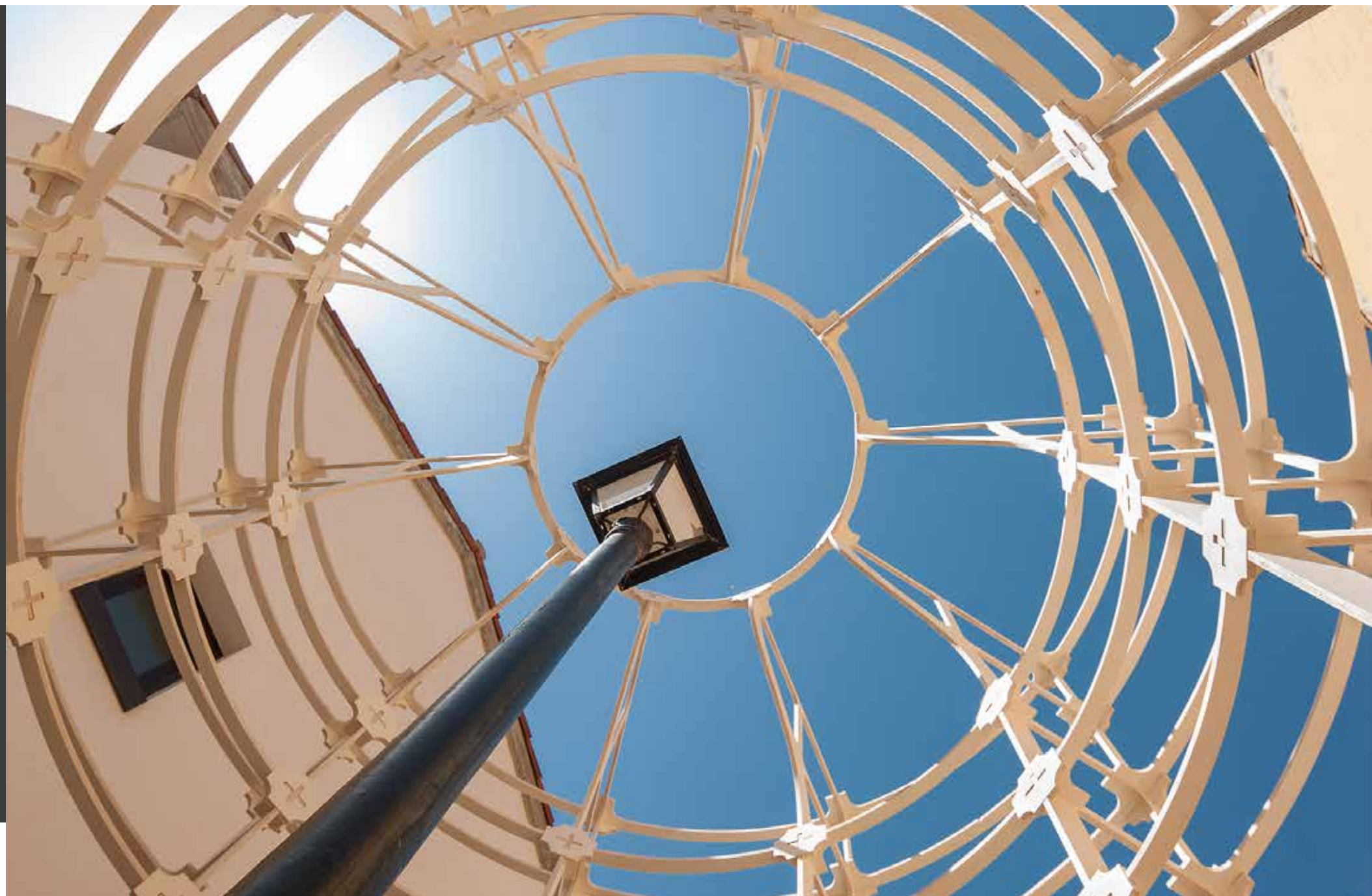




Mjök

Lantern

# Lantern





A LIGHT THAT INVOKES THE BEAUTY OF SHADOWS

Mjöllk's proposal combines simplicity and lightness.

# L a n T e R n

It is a lantern that is turned off during the day, like the rest of the streetlights at Santa Ana Square in Logroño. However, as night falls, darkness blurs the details, and only pedestrians' silhouettes are discernible, the streetlights turn on. Just then, the circular structure surrounding this particular streetlight, like a kind of spiderweb, projects light, transforming it into a lantern that illuminates the space.

It is a subtle intervention that, in a square full of streetlights (six to be exact), puts the focus on one in particular, giving it a special feel. This unique installation from the studio of Czech architect Mjöllk was part of the fourth edition of the Concéntrico International Festival of Architecture and Design in Logroño.

The wooden cage surrounding the streetlight is put together without any screws. It has an entrance on one side and seats to rest on; it offers shade during the day, and at night, it emanates a different light, thickened with shadows and figures, giving the square another dimension and creating a unique space for gathering.

It is a subtle intervention that, in a square full of streetlights, puts the focus on one in particular.

"At night, it emanates a different light, thickened with shadows and figures, giving the square another dimension".



**Location:**  
*Logroño, La Rioja, Spain*



**Year:**  
*2018*



**Main material:**  
*20 Efficiency Poplar plywood panels*

## Lantern





Lights and shadows give  
a new dimension to the  
space of the square.



## Lantern



A circular cage surrounds a streetlight to convert it into a lantern.





# Lantern

The structure is comprised of small pieces of plywood that connect to each other without needing screws.



## CREATOR

### Mjöllk

This Czech architect's studio was founded in 2008, just seven days after its members completed their studies at the Faculty of Arts and Architecture at the University of Liberec in the Czech Republic. After many years of hard work, this childhood dream has gained international recognition thanks to an architectural style that is characterized by conceptual simplicity, veracity, and youthful joy, always putting the emphasis on the surrounding environment.





Juan Llamazares Argüelles

# STAIRWAY TO HEAVEN



## STAIRWAY TO HEAVEN



**MATERIALS IN A NATURAL STATE, RESISTANT TO ANY WEATHER**

The work is an invitation to contemplate reality while closer to heaven than earth.

# STAIRWAY TO HEAVEN

With this highly technical intervention, located at Viña Lanciano, the Bodegas LAN vineyard, Madrid-born architect Juan Llamazares Argüelles won first prize at the fifth edition of the Concéntrico International Architecture and Design Festival.

It is literally a stairway to heaven, rising upward to a height of 8 meters to offer a privileged 360° panoramic view of a sea of vines, embraced on three sides—to the north, east, and west—by the meandering Ebro River. The installation offers the visitor a change in point of view, which is normally from ground level. The progressive ascent prepares them for the sublime experience of admiring the landscape.

Erecting this scenic overlook required developing solid foundations to support the structure. Built entirely of Garnica ultra-durable, exterior-use panels from sustainable European plantations, the installation was based on the use of materials in a natural state, untreated.

**This literal stairway to heaven rises upward to a height of eight meters.**

"The progressive ascent prepares the visitor for the sublime experience of admiring the landscape".



**Location:**  
*La Rioja, Spain*



**Year:**  
*2019*



**Main material:**  
*20 Duraply plywood panels*



## STAIRWAY TO HEAVEN



As the spectator draws nearer to the summit, they discover a scenic overlook projected above the landscape. Climbing is not optional.

# STAIRWAY TO HEAVEN

Supporting the eight-meter structure required building solid foundations, which entailed great technical difficulty in completing the project.



## CREATOR

### Juan Llamazares Argüelles

This Madrid-born architect has participated with his own works in several competitions, both at personally as well as in group projects. In 1996, he founded the infography and architectural representation studio Isografik, which combines a multi-disciplinary team including architects, graphic designers, and programmers with an extensive network of collaborators in photography, video, illustration, and design. From his studio, Llamazares has collaborated in different national and international projects.





Mills Turner

# DOUBLE BENCH

## DOUBLE BENCH





A BENCH among TEN PROJECTS FOR London

One of the features of this proposal is that it is easy to assemble and disassemble.

# DOUBLE BENCH



This double bench, proposed by the Mills Turner studio and made by Monarch Joinery Limited, was one of the 10 projects selected to participate in the design contest organized in 2018 by the London Festival of Architecture (City of London Corporation) and Cheapside Business Alliance.

Garnica's Duraply plywood was the material chosen for its construction due to its exceptional strength in exterior applications. This product is comprised of poplar wood from sustainable European plantations, modified with an innovative treatment that provides incredible durability in exterior uses. Built with a repetition of curved plywood sections with steel bars threaded through and screwed on the ends, this double bench is easy to set up, is quickly disassembled, and can be stored flat.

The bench is ergonomic, its silhouette following the natural curve of the human body when seated, and thanks to its innovative and functional building technique, it can be as long or short as is desired, depending on where it will be installed.

**An ergonomic bench, whose silhouette follows the natural curve of the human body when seated.**

"Garnica's Duraply plywood, a poplar wood product from sustainable European plantations, was the material chosen for its construction".



**Location:**  
*London, UK*



**Year:**  
*2018*



**Main material:**  
*18 Duraply plywood panels*

## DOUBLE BENCH





# DOUBLE BENCH

The bench can be made as long or as short as is desired, depending on where it will be located.



## CREATOR

### Mills Turner

Mills Turner is an architecture, design, and development studio headquartered in London. Its two founders gained professional experience in Switzerland before returning to the United Kingdom and founding the firm.



Picado de Blas

**eL ciempiés**



## el ciempiés



A LONG, SINUOUS, AND MULTI-FUNCTIONAL TABLE

# el ciempiés

During Concéntrico 03, this installation served as a meeting place.



The Picado de Blas architecture studio's proposal for the third edition of Concéntrico was inspired by what its very name indicates —the centipede. It is an articulated structure, comprised of 50 parts and 100 legs to achieve the longest length possible: a total of 100 meters, which emulates chilopods (centipedes).

Located in Logroño's San Bartolomé Square, the intervention was presented as a soft, winding, and horizontal line at table-height that, without affecting the environment, offered multiple uses to a lively and vibrant space like this square.

The work tells us about the limits of the space, ephemerally distorting them with its presence, while also providing all the possibilities of a table. During the festival, it served as a support for an outdoor market, for a group wine tasting, and as a recreation site for pedestrians.

The proposal was inspired, as its name indicates, by a centipede.

"It is an articulated structure, comprised of 50 parts and 100 legs to achieve the longest length possible, 100 meters, which emulates chilopods (centipedes)".



**Location:**  
Logroño, La Rioja, Spain



**Year:**  
2017

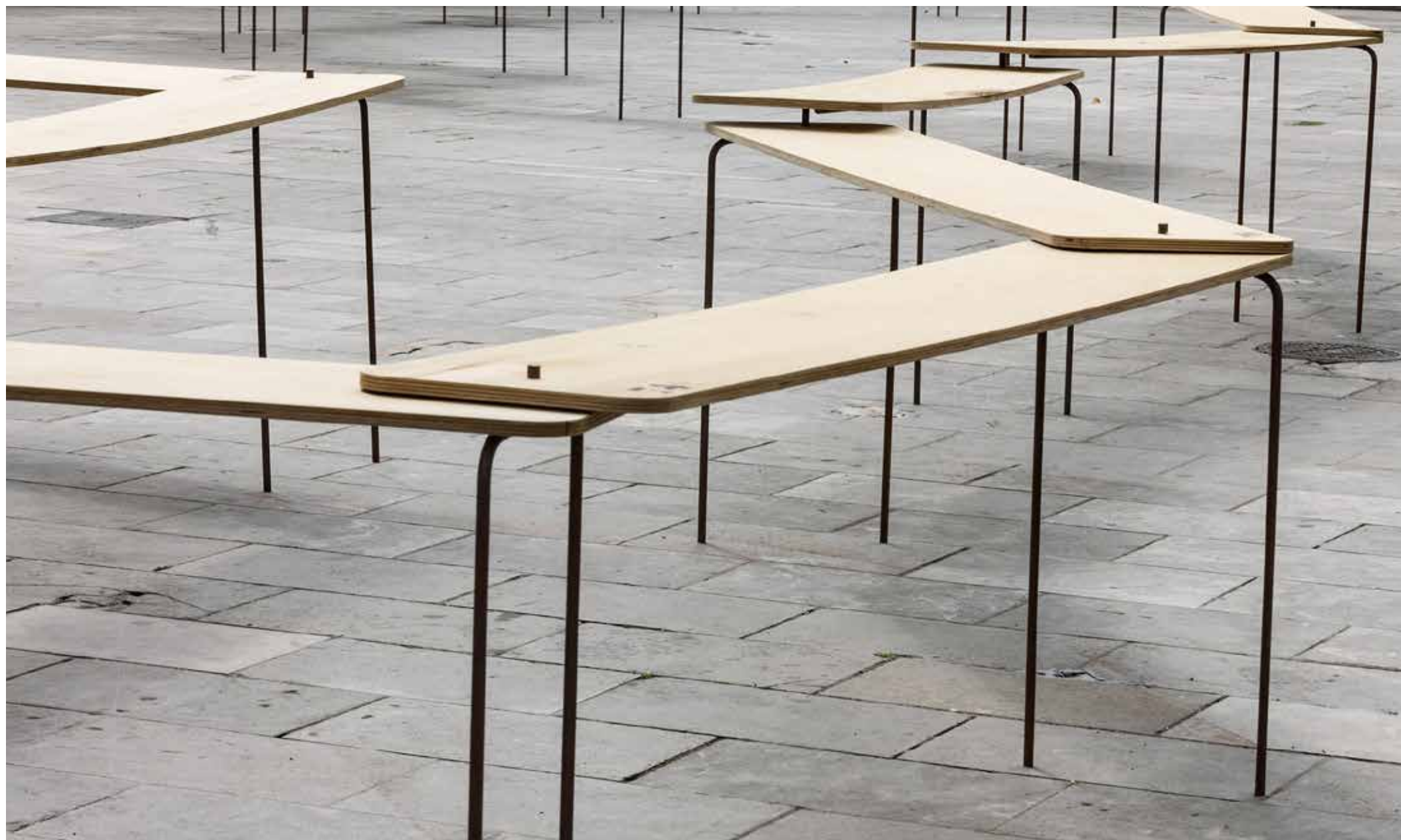


**Main material:**  
20 Duraply plywood panels



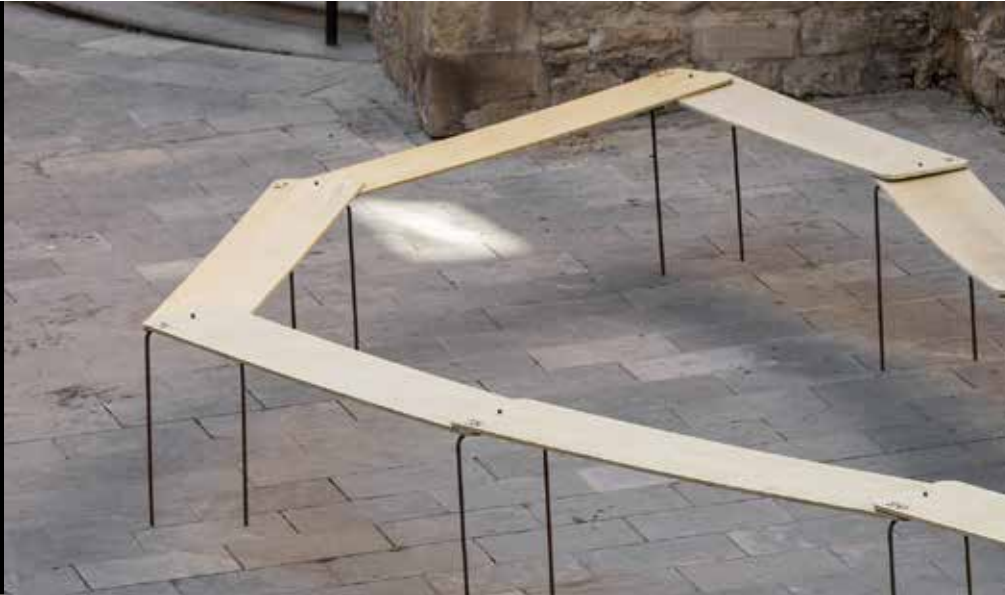
## el ciempiés







## el ciempiés



# el ciempiés

A 100 meter long structure with 50 parts and 100 legs: a centipede.



## CREATORS

### Picado de Blas

The Picado de Blas studio, headquartered in Madrid, is led by **María José de Blas** and **Rubén Picado**, architects from the Higher Technical School of Architecture in Madrid (ETSAM). Both combine teaching with their professional activity and are coordinators of the Multi-Discipline Project Workshop. Both are professors and tutors of the Thesis Project Program at the San Pablo CEU Polytechnic University in Madrid, and they collaborate in the Master of Design at IED and the Master of Advanced Architecture at ETSAM.



From front to back, in order:  
*Rubén Picado, María José de Blas, Sofía Fernández,  
Alberto Amores, Carlos Díaz-Monís, Teresa Casbas,  
and Yong Li.*



MYCC

# Home URBan Home

# HOME URBAN HOME





A home where two spatial plans are superimposed.



**Location:**  
*Madrid, Spain*



**Year:**  
*2018*



**Main material:**  
*33 Efficiency Poplar plywood panels*

One house inside of another

# Home URBan Home

This minimalist home, with just 18 m<sup>2</sup> of surface area, was designed by the MYCC architecture studio to serve as a workplace and residence for artists affiliated with the Conde Duque Cultural Center.

Before finding its permanent home, the first-floor theater lobby, the piece was built in the central courtyard so it could be visited by the public during the Madrid Design Festival.

The layout is one home inside of another. A small cell within another larger and lighter one serves as an intermediate space between the first and the exterior.

This duality is achieved by combining two very different materials: polycarbonate and wood. These create two practically opposite environments: one, an opaque, warm, and isolated refuge, and the other, a luminous and transparent space where the vegetation finds its place and gaps are opened to enjoy the sunset in the city.

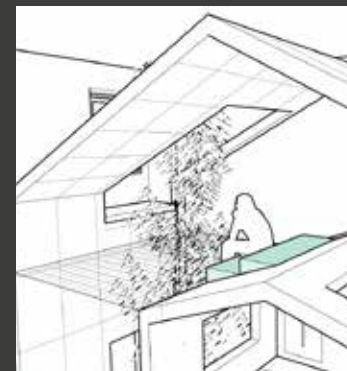
**The duality is achieved by combining two very different materials: polycarbonate and wood.**

"Two practically opposite environments are created: one, an opaque, warm, and isolated refuge, and the other, a luminous and transparent space".

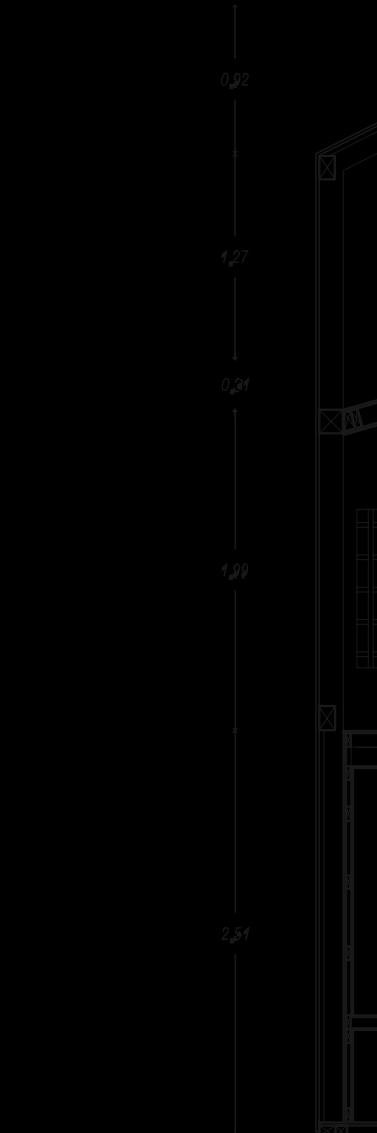
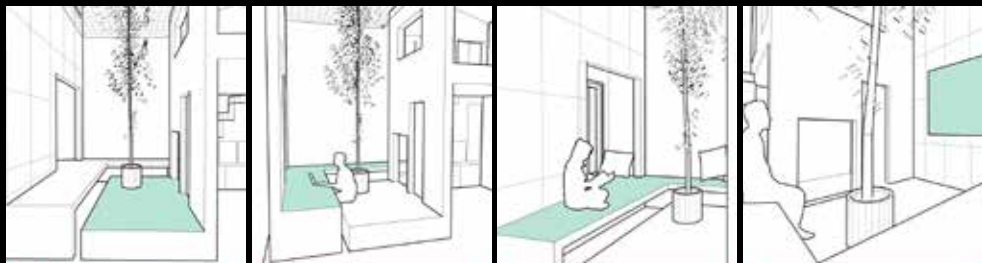
# HOME URBAN HOME







# HOME URBAN HOME





# Home Urban Home

MYCC used plywood and polycarbonate to create their own proposal within the framework of the Madrid Design Festival 2018.



## CREATORS

### MYCC

This architecture studio is led by **Carmina Casajuana** and **Beatriz G. Casares**, both architects from the Higher Technical School of Architecture in Madrid (ETSAM) with specializations in building and urban planning, and former students at Technische Universität in Dresde and Akademie der Bildenden Künste in Vienna. They completed post-graduate studies at the Universidad Politécnica in Madrid, focusing on sustainability and efficient design in the city and at home. They have also participated as assistant professors at universities such as the Technische Universität in Berlin and the KTH Royal Institute of Technology in Stockholm.



*Carmina Casajuana and Beatriz G. Casares.*



Alison Brooks Architects

# Recasting



## RECASTING



Open spaces within the urban home acquire life in this work

*ReCasting* was installed in La Corderie dell'Arsenale in Venice.

# ReCasting

The *ReCasting* installation is Alison Brooks Architects' response to the invitation to participate in the 16th edition of the Venice Biennale of Architecture in 2018. That year, the topic around which the international architecture exhibit revolved was the urban home, and it was condensed into a single word: freespace.

Located in the Corderie dell'Arsenale in Venice and using 318 Garnica wood panels, the installation simulates the critical free spaces in the home as four habitable "totems": the threshold, the inhabited space, the hallway, and the rooftop. These iconic spaces invite you to explore, emerging from a unifying base to frame a type of amphitheater for meeting up.

Each place offers a particular spatial, emotional, and sensory experience, which takes advantage of the specific qualities of light and the volume of the Corderie. The mission of this installation was to reveal the civic role of domestic architecture and its potential as a meaningful experience.

**The installation simulates critical free spaces in the home as four habitable "totems".**

"Each place offers a particular spatial, emotional, and sensory experience, which takes advantage of the specific qualities of light and the volume of Corderie dell'Arsenale in Venice".



**Location:**  
Venice, Italy



**Year:**  
2018



**Main material:**  
318 Efficiency Poplar plywood panels



## RECASTING



Light and volume to make the space more habitable.







## RECASTING



# RECASTING

The Allison Brooks Architects installation converts free spaces of the urban home into authentic iconic places for everyday life.



## CREATORS

**Allison Brooks Architects, Arup, and Benchmark Furniture**  
Allison Brooks is one of the most internationally renowned and awarded architects. A native of Guelph, Ontario, she studied at the University of Waterloo before settling in the United Kingdom in 1988.



*Allison Brooks Architects (Allison Brooks, Ceri Edmunds, Michael Mueller), Arup (Ed Clark, Andrew Lawrence, Ishan Abeysekera, Tara Clinton), and Benchmark Furniture.*





Roberto Narváez

# BUBBLE pavilion

## BUBBLE PAVILION





ARCHITECTURE INSPIRED BY SOAP BUBBLES

# BUBBLE PAVILION

The pavilion is based on spherical clusters of bubbles with the same radius.



Temporarily installed in the garden of the Higher Technical School of Engineering at the University of Seville, *Bubble Pavilion* is the result of a geometric, structural, and constructive study, designed by Roberto Narváez, professor and researcher at said university. A team of over 100 teachers and students directed by Narváez participated in the project.

Inspired by something as weightless and ephemeral as soap bubbles, the installation was designed with the aim of translating the structure of the bubbles into an architectural system applicable to any type of shape. The geometry of soap bubbles, when joined together, served as a starting point for this project. It measures eleven meters in length, has 14,000 pieces of wood, and took four months to design, manufacture, and assemble.

The directors of *Bubble Pavilion* collaborated with Maderas Cilpe, specialized in wood products, as well as Garnica, which provided the plywood panels used in the construction.

Eleven meters long and 14,000 pieces of wood.  
"The geometry of soap bubbles, when joined together, served as a starting point for this project".



**Location:**  
Seville, Andalusia, Spain



**Year:**  
2018



**Main material:** 160 Globulus Elegance plywood panels  
in different thicknesses:  
Fifty-five 5 mm panels  
Seventy-five 8 mm panels  
Thirty 20 mm panels



## BUBBLE PAVILION

Using computational or parametric design tools, the project sought to investigate in a practical manner new ways of thinking about architectural design.









## BUBBLE PAVILION

Details of the  
installation assembly.





# BUBBLE PAVILION

CAD (computer-aided design) applications were used for the design, and CAM (computer-aided manufacturing) digital manufacturing techniques and systems were employed to cut the pieces.



## CREATOR

### Roberto Narváez

Architect and engineer, with a master's in engineering and an expert in bilingual university teaching. A professor at the University of Seville since 1999, he is part of the Department of Graphic Engineering and gives conferences in the Higher Technical School of Engineering and the Technical School of Architecture. His current research is focused on two topics: algorithmic design and digital manufacturing in architecture, and the implications of digital technologies on the foundations of architectural geometry.

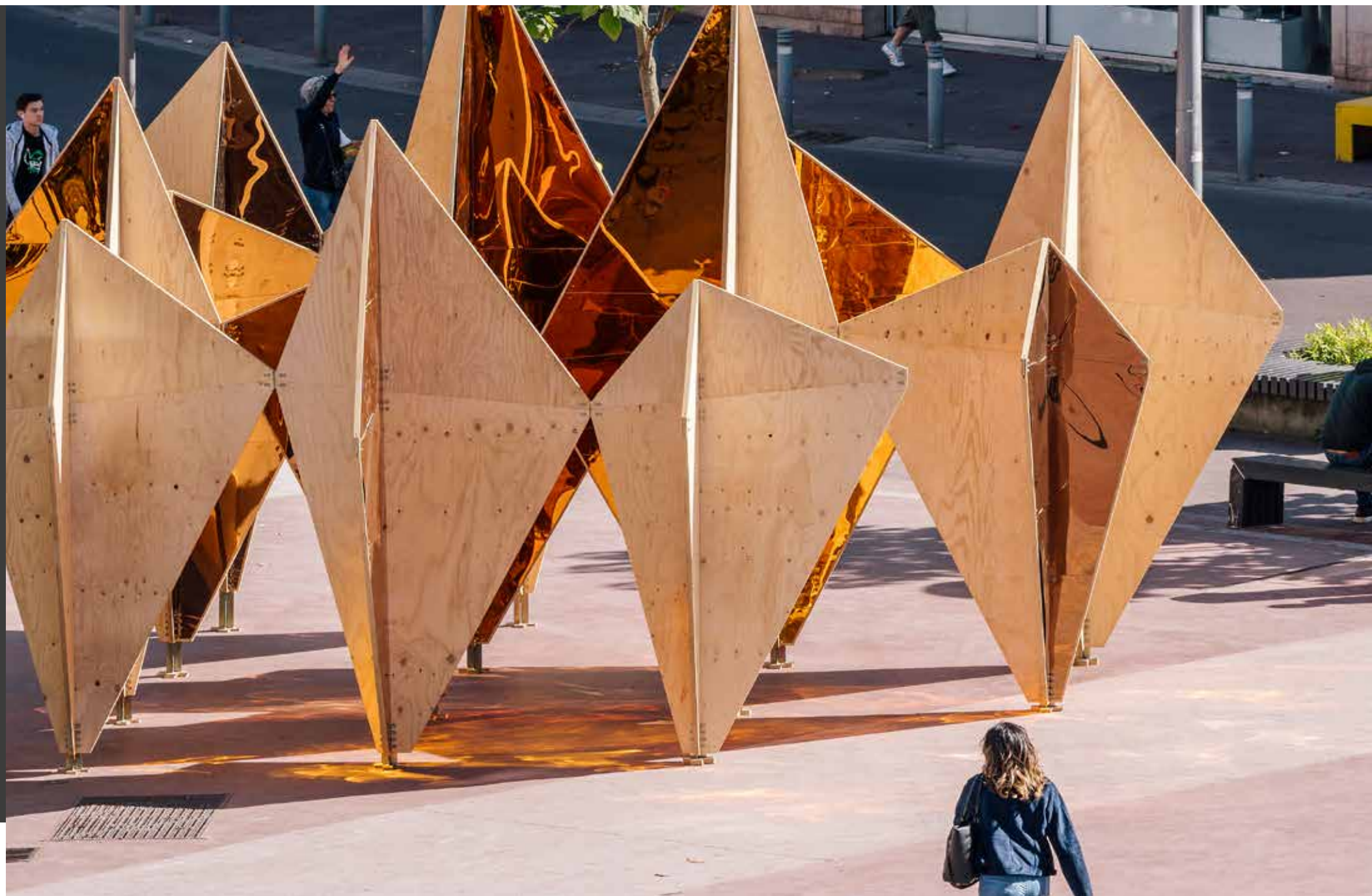


Mecanismo

**La FORÊT**



## LA FORÊT



A GEOMETRIC FOREST IN THE MIDDLE OF THE FRENCH CITY ROUEN

# La FôRêT

*La Fôret* (The Forest) integrates the organic complexity of nature into the urban space.



*La Fôret* (The Forest), from the Madrid architecture studio Mecanismo, was the winning project for the call that in 2019 was jointly made by the Concéntrico International Festival of Architecture and Design, the Métropole of Rouen Normandie, and La Forêt Monumentale, the monumental art biennial that the city organizes, which is focused on integrating art and the forest. Sixty projects were presented at the call.

The intervention, located in the neighborhood of Saint Sever in the French city of Rouen, was the only urban piece at the biennial, and it used 74 Garnica wood panels.

The creators of the installation, Pedro Rica and Marta Urtasun, started with the strict geometry of the wood panels to create a forest, thus making an organic and complex space based on simple geometric norms. The intention of the work was to integrate the forest into the urban landscape, allowing pedestrians to vividly interact with it, even exploring it from the inside.

Located in the Saint Sever neighborhood of the French city Rouen, *La Fôret* was the only urban piece at the biennial.

"Starting with the strict geometry of the wood panels, the artists created a forest, thus making an organic and complex space based on simple geometric norms".



**Location:**  
Rouen, France



**Year:**  
2019



**Main material:**  
60 Audio Deco plywood panels  
14 Audio Pine II/III plywood panels



## LA FORÊT



The intervention was located in the Saint Sever neighborhood of the French city of Rouen.







## LA FORÊT





# La Forêt

The strict geometry of the wood panels is the starting point for creating a forest in the middle of a city.



## CREATORS

### Mecanismo

This architecture studio founded in 2012 by **Pedro Rica** and **Marta Urtasun**, was born out of these two professionals' obsession with research and innovation, as well as their affinity for the nature of materials and detail. Their work is focused on the production and execution of projects, systems, and products related to design and architecture, starting from the idea all the way to the execution of all details.







Lauren Martin

**aRBRe**

arbre





## RECYCLED WOOD PANELS TO CREATE ART

# ARBRE

A tree that condemns the excess concrete in cities.



With this immense work that simulates a fallen tree, artist Lauren Martin, known for his commitment to recycling and sustainability, reflects on cities where life always hastily flows without time or space to enjoy nature.

Located on the Gran Vía in Logroño as part of the seventh edition of the Concéntrico Architecture and Design Festival, this installation melts into the environment, inviting the observer's contemplation.

According to Martín, human beings "are increasingly taking over spaces, continuing to pour concrete, and reducing natural spaces. There isn't a single place to plant a tree, not even a seed."

Made with disused plywood panels, this tree is a testament to second chances and how we can recycle to give new life to objects. The proposal also addresses the need to humanize cities and to treat our home, Planet Earth, in a friendlier and more sustainable manner.

Made with disused plywood panels, this tree is a testament to second chances and how we can recycle to give new life to objects.

"The proposal also addresses the need to humanize cities".



**Location:**  
*Logroño, La Rioja, Spain*



**Year:**  
*2021*



**Main material:**  
*150 disused Garnica plywood panels*

# ARBRE









## arbre





# ARBRE

The Gran Vía of Logroño (La Rioja, Spain) was the space selected for the installation of *Arbre*, which was made with 150 disused wood panels.



## CREATOR

### Lauren Martin

An artist committed to respecting nature and sustainability, he makes his works from recycled elements. He received his Bachelor of Fine Arts from Rouen in 2006 and works with sculptures, installations, and designs based on different materials; he has completed residencies and exhibitions throughout France.





Robin Falck

nolla



nolla





## AN INHABITABLE SPACE WITH A MINIMAL CARBON FOOTPRINT

Modernity and simplicity perfectly fused with their environment.

# nolla



For Robin Falck, designing the *Nolla* cabin was a challenge. He wanted to show that living with a minimal carbon footprint is viable. The Finnish renewable energy company Neste proposed that he participate in their "Journey to Zero" campaign to promote a world with fewer carbon emissions. Summer homes or "kesämökki," which are a cornerstone of Finnish culture, were Falck's starting point to solving the problem.

The idea was to create a cabin that challenged norms and left as small of a CO<sub>2</sub> footprint as possible, eliminating the permanent concrete base. The energy comes from solar panels, and the kitchen works off of renewable diesel made from waste. It was built on Vallisaari island in the Helsinki suburbs for the Neste campaign. In August, the cabin was posted on Airbnb and was completely booked within the first two hours.

In Spain, as part of the fifth edition of the Concéntrico International Architecture and Design Festival, Robin Falck designed an identical cabin with Garnica pine panels and large windows on the roof that mimicked solar panels. It was installed in the courtyard of the La Rioja College of Architects, located in the Palace of the Marquis of Legarda on the shores of the Ebro River, providing the space with a newfound uniqueness. An architectural combination of modernity and simplicity perfectly fused with its environment, the warmth of the wood and the mirror effect of the roof made a perfect play with the large palm trees of the courtyard reflecting the blue of the sky and the certainty that a sustainable future is on the horizon.

**Finnish summer houses, or "kesämökki," were the starting point.**

"An architectural combination of modernity and simplicity perfectly fused with its environment".



**Location:**  
*Logroño, La Rioja, Spain*



**Year:**  
*2019*



**Main material:**  
*20 Laudio Deco plywood panels*



**nolla**







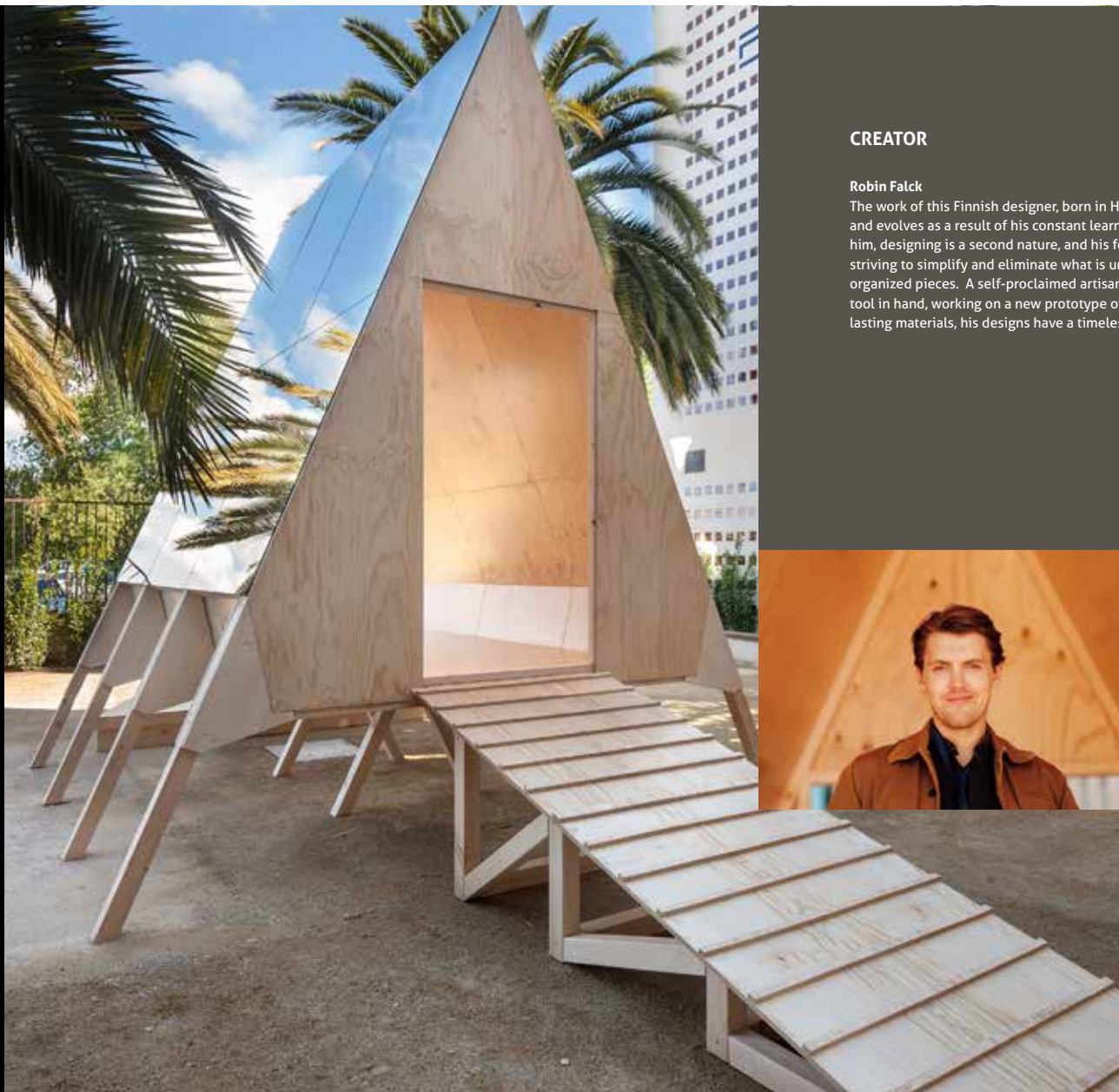


**nolla**



# nolla

The *Nolla* cabin was designed as a habitable space with the smallest carbon footprint possible.



## CREATOR

### Robin Falck

The work of this Finnish designer, born in Helsinki, is driven by his curiosity and evolves as a result of his constant learning and mastery of new skills. For him, designing is a second nature, and his focus on each work is tactile, always striving to simplify and eliminate what is unnecessary to create elegant and organized pieces. A self-proclaimed artisan, it is easy to find him in his studio, tool in hand, working on a new prototype of something. Enamored with long-lasting materials, his designs have a timeless and sustainable character.

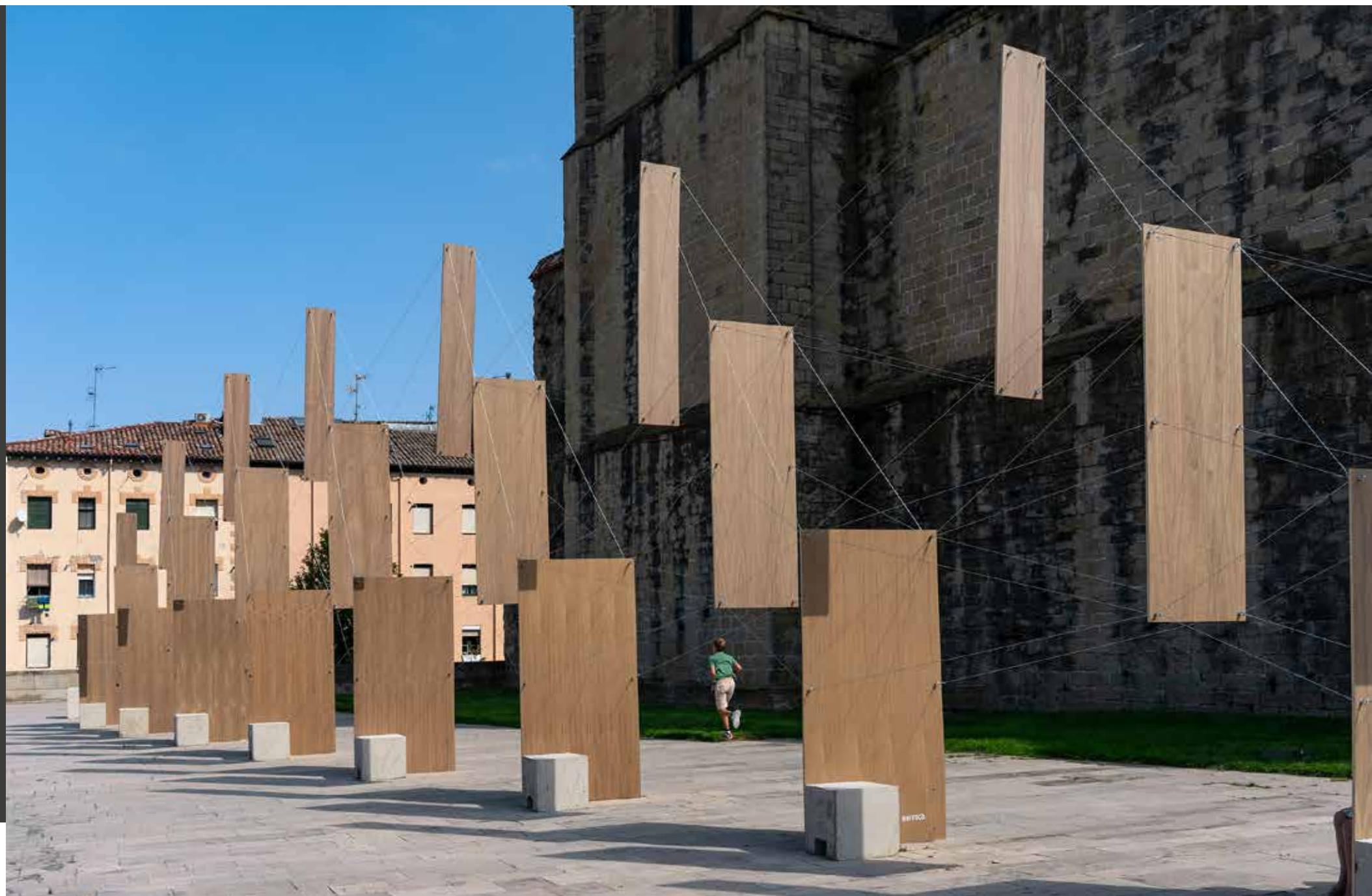




Jordi Galí with Jérémy Paon  
and Julien Quartier

**arcos**

**ARCOS**





## POETIC GEOMETRY

# ARCOS

*Arcos speaks of the beauty of movement in suspension.*



**This abstract and geometric intervention speaks to the passer-by with poetry. It was erected as a massive house of cards, echoing the rhythm of the cypresses and extending an impossible perspective toward the rear wall of the church in Logroño's Santiago Square as part of the sixth edition of the Concéntrico International Architecture and Design Festival in Logroño.**

With this work, the creators' idea was to symbolically reconnect the curves of the site —Santiago Square— with the historic neighborhood of the Riojan capital through the extension of three imaginary, horizontal, and practically concentric circles. The epicenter was in front of the Moderno cafe, with its ends touching at the Former Tobacco Factory.

The installation is 40 meters long, has three levels, and features two soft, vertical arches that accentuate the length of the square. The plywood panels were interconnected with cables and kept above ground following the principle of tensegrity. The final level was up to 7 meters tall.

**40 meters long, three levels, and two soft and vertical arches.**

"A massive house of cards, it echoes the rhythm of the cypresses and provides an impossible perspective".



**Location:**  
*Logroño, La Rioja, Spain*



**Year:**  
*2020*



**Main material:**  
*20 Elegance Walnut plywood panels*

## ARCOS







## ARCOS





# ARCOS

The lightness of Garnica panels was the key to achieving their suspension in the air, adjusting tension cords to make the curves and gain height.



## CREATORS

**Jordi Galí with Jérémy Paon and Julien Quartier**

Born in Barcelona, **Jordi Galí** studied contemporary dance. In his work, especially work intended for public spaces, he combines the relationship between the human body and materials. He is the artistic director of "Arrangement Provisoire," a dance and public space project company. **Jérémy Paon** is a dancer, and **Julien Quartier** is a dancer and carpenter. Both have worked with Jordi Galí and his team for several years.



Mecanismo

Banquín



# Banquín



## URBAN FURNITURE SEEN FROM ANOTHER PERSPECTIVE

*Banquín* proposes a profound and entertaining interaction between the city and its people.

# Banquín



Rethinking the use of the city, its spaces, and its elements to make it more livable, friendly, and human. Squeezing the potential out of those things that we find in everyday life in the city and that we have integrated into our everyday life with a strictly functional perspective, transforming the perception of them and their use in order to give them a new dimension.

This was the starting point for Pedro Rica and Marta Urtasun and their work on a commonplace element —the park bench— for the sixth edition of the Concéntrico Architecture and Design Festival in Logroño. The challenge these two architects proposed was to make the bench cease to be seen as a mere part of urban furniture that just fulfills the function of offering a place to rest and is usually only used by one person.

That is how *Banquín* (Little bench), a see-saw bench on Gran Vía in Logroño, was created. Thanks to its dimensions and structural dynamism, it allows the user to interact with it in various manners depending on its use: for sitting, of course, but also as a rink for skateboarders, a walkway, or an improvised bed for taking a nap.

### *Banquín*, a see-saw bench.

"Getting the bench to cease to be seen as a mere piece of urban furniture was the challenge these two architects posed".



**Location:**  
Logroño, La Rioja, Spain



**Year:**  
2020



**Main material:**  
20 Elegance Birch UV plywood panels



## Banquín







## Banquín



# Banquín

A bench that not only functions as a seat, it opens up a wide range of possibilities for users.



## CREATORS

### Mecanismo

This architecture studio, founded in 2012 by **Pedro Rica** and **Marta Urtasun**, was born out of these two professionals' obsession with research and innovation, as well as their affinity for the nature of materials and detail. Their work is focused on the production and execution of projects, systems, and products related to design and architecture, starting from the idea all the way to the execution of all details.







Petrit Halilaj

# CHOPOS con arte

## CHOPOS CON ARTE





Open nests under one glass roof

The artist used nature as a representation of his own biography.

# CHOPOS CON ARTE



**Location:**  
Madrid, Spain



**Year:**  
2020



**Main material:**  
Garnica poplar branches

*To a crow and the hurricanes, which from unknown places, bring back scents of enamored humans* was the first individual exhibit in Spain of Kosovan artist Petrit Halilaj. The exhibit was organized by the Reina Sofia Museum in The Glass Palace in Retiro Park in Madrid. It is a metaphor of the freedom of the birds, flying and living without borders.

The piece converted the area into a huge nest, connecting the interior with the exterior and the visitors to the environment through open windows and the installation of structures and feeders to attract birds and other creatures that inhabit the park or are passing through.

Garnica collaborated in the work, donating the poplar branches that Halilaj used to set the scene of this original amalgam of nature with large flowers, nests, and birdfeeders. The branches given to the Reina Sofia Museum were selected and carefully handled during the forest harvest in February 2020, originating from "high quality trees."

Originally from the Garnica plantation made with the MC clone in 2002 on a 12-hectare lot located in the municipality of Escalona (Toledo) next to the Alberche River, the poplar branches provided the space with the dimension of art inhabited by nature.

**It is a metaphor of the freedom of birds flying and living without borders.**

"Garnica collaborated in the work, donating the poplar trees that Halilaj used to set the scene of this original amalgam of nature".



## CHOPOS CON ARTE



Poplar branches donated by Garnica, originally from sustainable plantations, were combined with large flowers, nests and bird feeders.







## CHOPOS CON ARTE





# CHOPOS CON ARTE

This installation was artist Petrit Halilaj's first individual exhibit in Spain.



## CREATOR

### Petrit Halilaj

Born in 1986 in the part of the former Yugoslavia that is now Kosovo, the artist fled from the country with his family during the Yugoslavian wars from 1991-2001 to settle in Italy where he studied at the BRERA Academy of Fine Arts in Milan. He now lives and works between Germany, Kosovo, and Italy. His work is based on documents, stories, and memories related to the history of Kosovo. Halilaj is a joint tutor with Álvaro Urbano at the National School of Fine Arts in Paris, France.



*Artist Petrit Halilaj in the assembly of the exhibit titled "To a crow and the hurricanes that, from unknown places, bring back scents of enamored humans".*

*The Glass Palace July 2020  
Reina Sofia National Art Center Museum.*

*Photography: Alex Maltó Photographic Archive  
of the Reina Sofia Museum.*

Jakub Szczęsny

# TaBUREte TOWer



## TABURETE TOWER



STOOLS STACKED TO THE SKIES ABOVE

This work represented a landmark in the old medieval city of Logroño.

# TaBUREte TOWER

The installation from Polish architect Jakub Szczęsny formed part of the fifth edition of the Concéntrico International Festival of Architecture and Design. Located in the Casa Farias de Cáritas in Logroño, it was erected as a set of three removable towers with stools of different shapes.

The pieces, linked through tension thanks to an interior cable, were made with Garnica plywood panels with a radiata pine base from sustainable plantations, a material developed for decorative applications and with a varnish finish to highlight the grain.

These ephemeral skyscrapers were located in a courtyard hidden at the end of a narrow street in the old medieval city of the Riojan capital. When the festival ended, the towers were disassembled so that the people present during the closing ceremony could take the stools home. That way, the temporary intervention will remain in the memory of the attendees, evoking the place and work of art every time someone sits on the stool.

**A large removable tower made of stools of different shapes.**

"An ephemeral skyscraper located in a courtyard hidden at the end of a narrow street in the old medieval city of the Riojan capital".



**Location:**  
*Logroño, La Rioja, Spain*



**Year:**  
*2019*



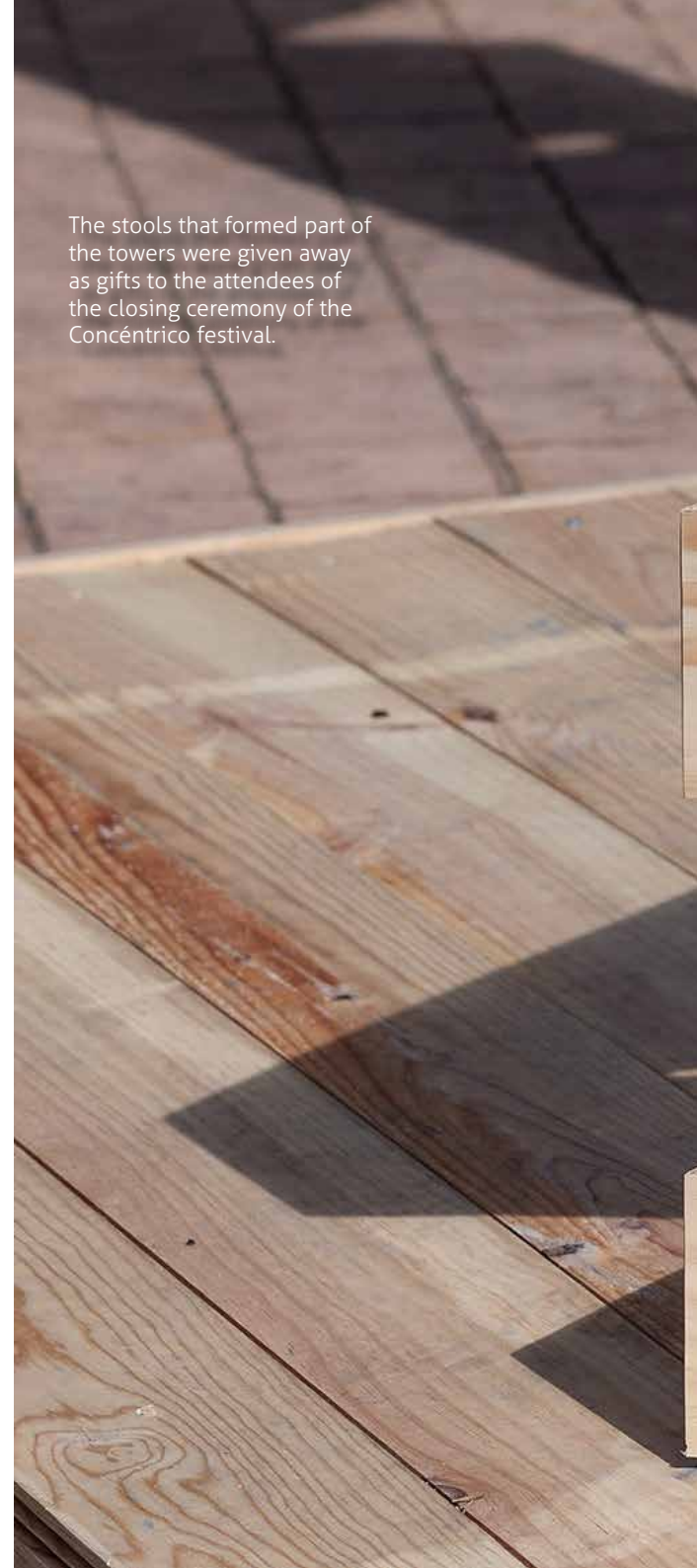
**Main material:**  
*20 Laudio Deco plywood panels*



## TABURETE TOWER



The stools that formed part of the towers were given away as gifts to the attendees of the closing ceremony of the Concéntrico festival.







garnica



## TABURETE TOWER



# TABURETE TOWER

Made with pine plywood, the towers formed very tall elements connected by tension with an interior cable.



## CREATOR

### Jakub Szczęsny

He is the first Polish architect whose work, "*Keret House*," called "the narrowest house in the world," was included in the permanent collection of the MoMA in New York. Since 2016, he has directed his SZCZ interdisciplinary studio in Warsaw, Poland, while also working on projects in several places, from Astana to Western Australia. He is interested in public spaces that provide physical platforms for social interaction. Besides this, he is creating pre-fab building brands, such as Simple House and FreeDOM, with a focus on micro-homes.



Jakub Szczęsny / Photo © Bartek Warzecha.



## acknowledgements

To Concéntrico, the International Architecture and Design Festival in Logroño (La Rioja, Spain), thanks for your wonderful project. It was the inspiration for this book. We are especially proud that our products form part of this proposal that connects us to our homeland.

To our clients, thanks for your support in helping us to grow and collaborate with these passionate initiatives. A special thanks to James Latham and Maderas Cilpe, who chose us to participate in several of the works outlined herein, giving visibility to Garnica panels in different places throughout the world.

Thanks to the architecture studios, artists, and creators, who have seen the virtues of Garnica's plywood panels and have had the knowledge to make them into impressive works of art.

And especially, thanks to the entire team and collaborators of Garnica for their dedication, time, and effort that have helped give life to the installations displayed here.



garnica



GARNICA ART