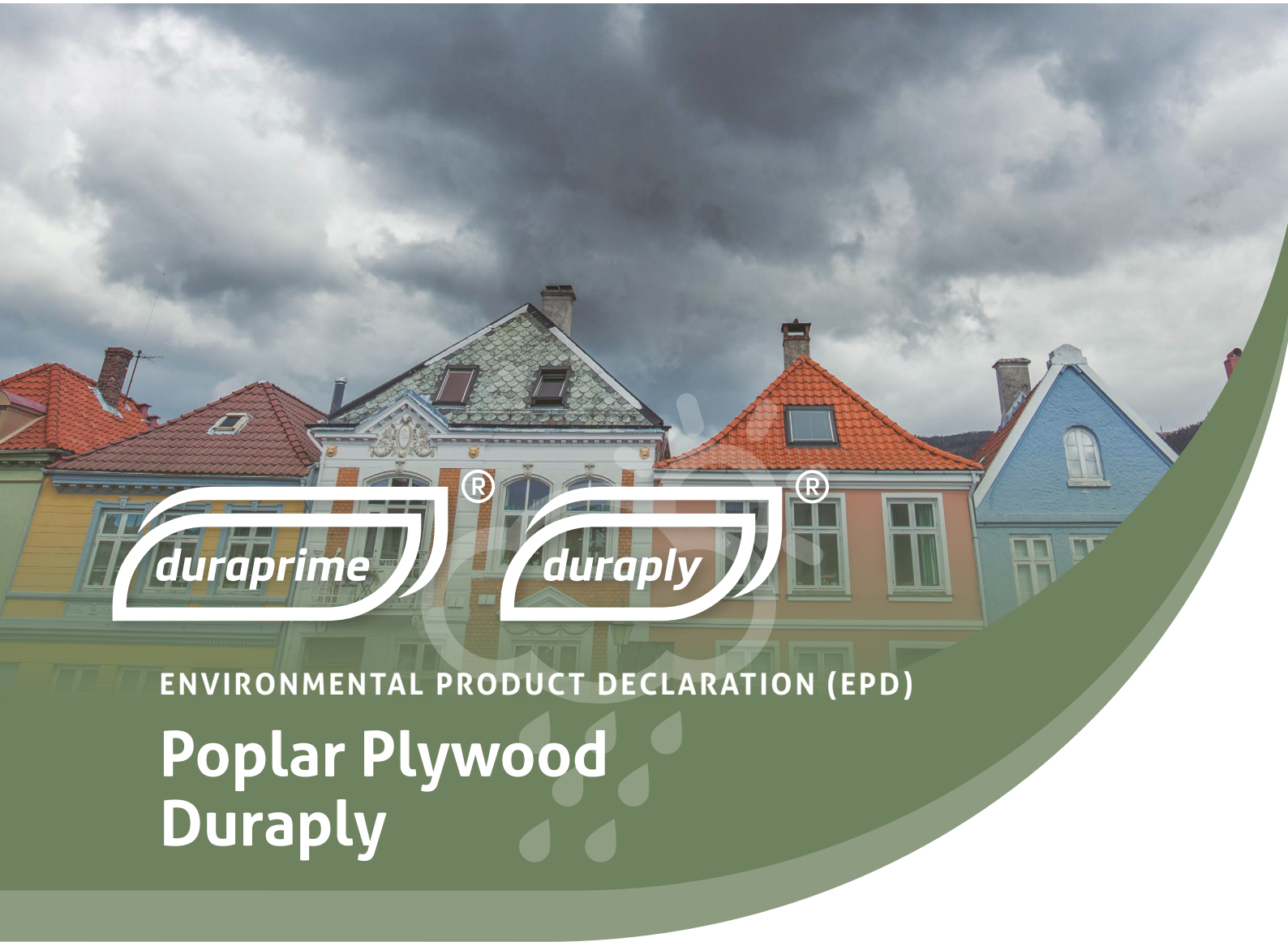




THE INTERNATIONAL EPD® SYSTEM



ENVIRONMENTAL PRODUCT DECLARATION (EPD)

# Poplar Plywood Duraply

## EPD

Programme: The International EPD System  
[www.environdec.com](http://www.environdec.com)

Programme operator: EPD International

EPD registration number: S-P-05372

Registration date: 2022-01-14

Revision date: 2022-07-07

Validity: 2026-12-26

Geographical scope: Global

## EPD OWNER

GRUPO GARNICA PLYWOOD S.A.U.

Web: [www.garnica.one](http://www.garnica.one)

E-mail: [quality@garnica.one](mailto:quality@garnica.one)

Complete report:



In accordance  
with **ISO 14025**  
and **EN 15804**

PCR 2012:01 FOR  
CONSTRUCTION PRODUCTS  
AND CONSTRUCTION  
SERVICES (V 2. 33), CPC 314  
BOARDS AND PANELS from:

# garnica

Challenge the ordinary

ABOUT GARNICA

# Introduction



### A benchmark in the market

Garnica is a global leader in the plywood industry. Our goal is to surprise our clients, wherever they are in the world, with an outstanding product using a unique production model based on sustainability and innovation.



### Challenging the ordinary since 1941

Since its founding in 1941 as a sawmill in La Rioja (Spain), Garnica has been a pioneer in exploring new ways to manage and use natural resources intelligently and to manufacture exceptional plywood solutions. Garnica has come a long way in that time, always in search of excellence, steadily progressing without losing sight of the future.



### European manufacturer

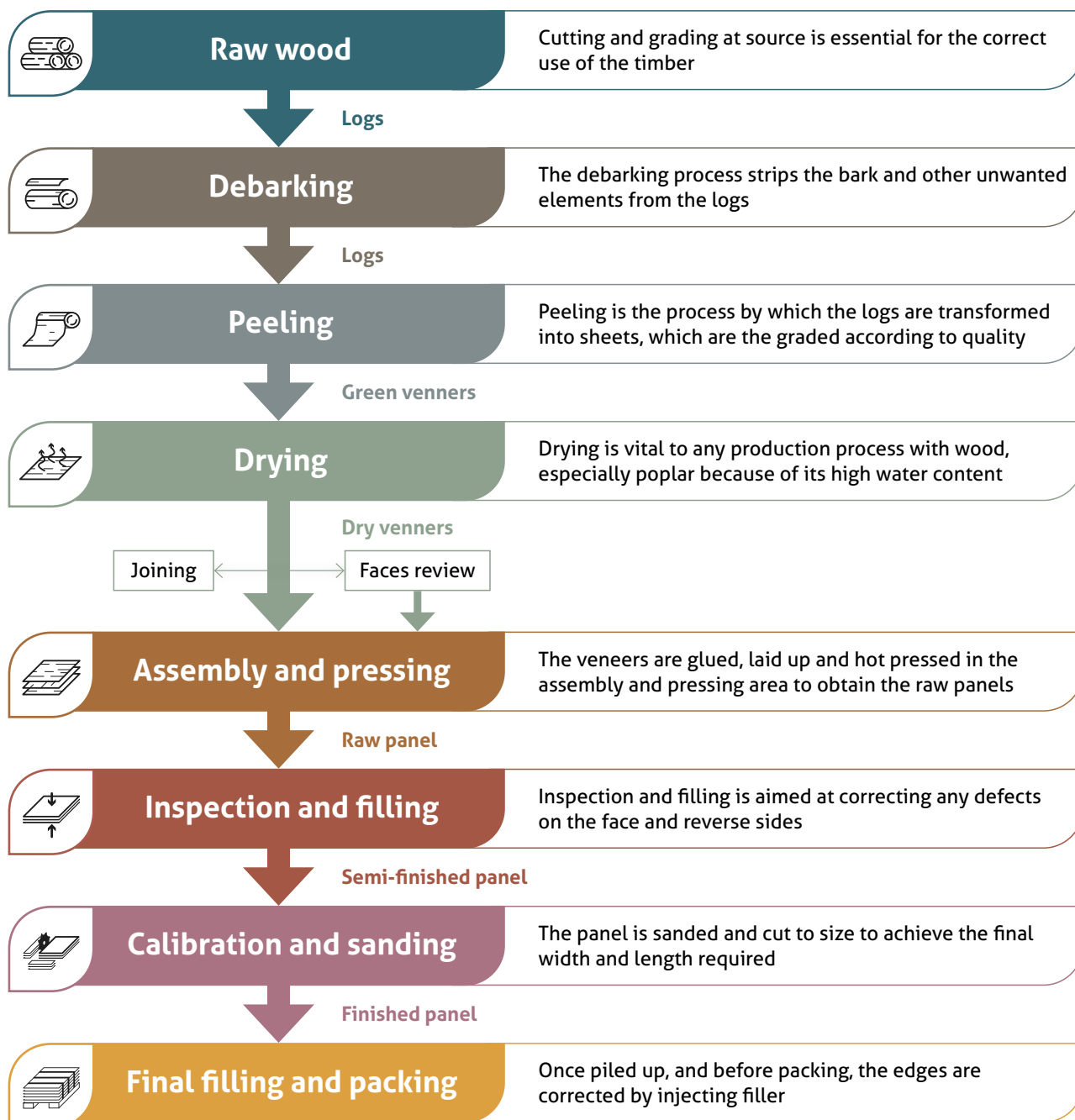
Garnica is strategically located near five of Europe's largest poplar plantations. It has central headquarters and seven production centres, five in Spain and two in France.



POPLAR PLYWOOD PRODUCTION PROCESS

# How we do it?

This document applies to interior use lightweight panels made entirely from sustainably planted European poplar panels manufactured by Garnica.



DURAPLY

# Product definition

Ultra-durable plywood for outdoor use, made of poplar veneers modified by a treatment, that makes the panel exceptionally durable. Treatment gives 100% of the panel improved durability even after sanding or machining. Maximum sustainability thanks to being composed primarily of fast-growing plantation wood. Available in two formats:



Raw plywood panels



Plywood panels with primed paper faces



**Gluing:** Class III (exterior) according to EN 636

**Emissions:** Class E1 according to EN 13986

## Planned applications

It is intended for outside applications:

- Construction: sandwich panels, light lattice, advertising panels, signage panels, facades, roof support, edges, cornices.
- Nautical: slide for furniture.
- Outdoor furniture: gardening, recreational areas, parks, street furniture
- DIY projects.



**FUNCTIONAL UNIT**

The functional unit is 1 m<sup>3</sup> of wood panels, including packaging.

**SYSTEM BOUNDARIES**

Cradle to gate with options. Modules A1 to A3.

**TIME REPRESENTATIVENESS**

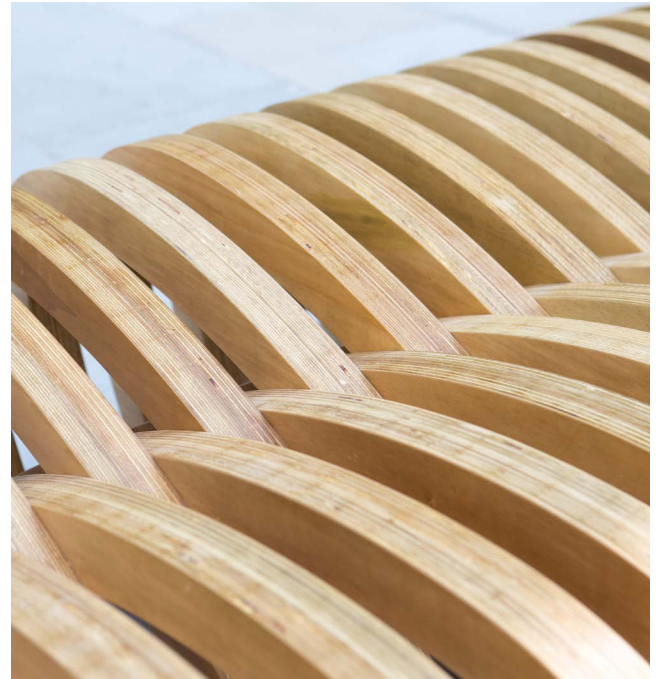
The inventory of the LCA study is based on the 2019 production for wood panels.

**ALLOCATIONS**

Allocation criteria are based on volume.

**DATABASE AND LCA SOFTWARE USED**

The LCA was modelled with SimaPro 8.0.5 LCA software using the impact factors and the Ecoinvent database (V3.01).



## ENVIRONMENTAL PRODUCT DESIGN

# LCA calculation

The limits that have been selected for the system cover the manufacture of wood panels, including the production of raw materials up to the point of the final packed product at the factory gate (life cycle designated from Cradle to Gate), following the guidelines of PCR 2012: 01 for construction products and services.

## MATERIALS AND ADDITIVES

Wood panels with a thickness of 15 mm and an average density of 450 kg/m<sup>3</sup>, have the following composition:

- **Wood (poplar wood):** 75-82% (depends on thickness and if Duraply / Duraprime panels).
- **Adhesive:** mix of different organic and inorganic substances containing melamine urea-formaldehyde resin (MUF), water, etc.
- **Durable salts.**
- **Duraprime panels also contain paper overlay.**

## EXTRACTION AND ORIGIN OF RAW MATERIALS

Wood comes predominantly from regional forest areas. This wood comes from forests situated within a radius of approx. 100 km from the production site. Transportation distances tend to be small in order to keep logistical costs as low as possible with the acquisition of raw materials.

## LOCAL AND GENERAL AVAILABILITY OF RAW MATERIALS

The wood used in the production of Duraply and Duraprime panels is obtained from local plantations. The forest areas where wood is harvested are both public and private areas near to Garnica production facilities. Garnica carries out the forestry operation for the majority of its supplies.

Forest and industrial by products, such as non-peeling logs, branches, wood chips, etc. are then used for other industries as raw materials.

The adhesive and salts used for production of the panels are mixed and prepared at Garnica facilities.

The adhesive used for the panels is mixed and prepared at Garnica facilities.





**The life cycle model that was chosen is “Cradle to Gate”, covering all operations required for manufacturing the panels, from felling the timber and cutting the wood until the fully finished product is obtained.**

The data that feed the calculation process represent the manufacturing process of wooden panels for the production period. This is primary data for the most part, collected directly from reliable sources that can be divided into the following categories:

- Delivery notes from delivered or supplied material.
- Map distances.
- Invoices.
- Direct measurements.
- Counters.
- Product data sheets.

The Environmental performance considered for the evaluation of impact associated with the production under 2012 v 2.33 PCR are as follows:

- GWP** - Global warming potential
- ODP** - Ozone layer depletion
- AP** - Acidification potential
- EP** - Eutrophication potential
- POCP** - Photochemical oxidant formation potential
- ADPE** - Abiotic depletion potential – Elements
- ADPF** - Abiotic depletion potential – Fossil
- WDP** - Water Scarcity Footprint
- HT** - Human toxicity

IMPACT CATEGORY	UNIT	Impact assessment per functional unit (1 m <sup>3</sup> )	Impact assessment per unit of board panel	Impact assessment per functional unit (1 m <sup>3</sup> ) of coated boards	Impact assessment per unit of coated boards
<b>GWP</b>	kg CO <sub>2</sub> eq	2,24E+02	1,02E+01	2,94E+02	1,34E+01
<b>ODP</b>	kg CFC-11 eq	3,39E-05	1,55E-06	4,31E-05	1,97E-06
<b>AP</b>	kg SO <sub>2</sub> eq	2,80E+01	1,28E+00	2,84E+01	1,30E+00
<b>EP</b>	kg PO <sub>4</sub> <sup>3-</sup> eq	5,48E+00	2,51E-01	5,63E+00	2,58E-01
<b>POCP</b>	kg C <sub>2</sub> H <sub>4</sub> eq.	8,49E-01	3,89E-02	1,06E+00	4,85E-02
<b>ADPE</b>	kg Sb eq	3,09E-04	1,42E-05	4,65E-04	2,13E-05
<b>ADPF</b>	MJ	3,29E+03	1,50E+02	4,21E+03	1,93E+02
<b>WDP</b>	m <sup>3</sup>	4,77E+00	5,11E-00	5,11E+00	2,34E-01
<b>HT</b>	kg 1,4-DB eq	2,70E+01	1,24E+00	3,59E+01	1,64E+00

ADDITIONAL INFORMATION

# CO<sub>2</sub> stored

The amount of CO<sub>2</sub> stored in the product was considered for achieving this balance, according to EN 16449. The formula used for calculating this CO<sub>2</sub> content is indicated in point 5 of EN 16449:2014 Wood and wood-based products - Calculation of the biogenic carbon content of wood and conversion to carbon dioxide.

The CO<sub>2</sub> balance, shows that manufacturing 1 m<sup>3</sup> of Duraply [A1+A2+A3] generates 223.94 kg of CO<sub>2</sub> per m<sup>3</sup>. A total of 750.00 kg of CO<sub>2</sub> per m<sup>3</sup> is the biogenic carbon content (according to EN 16449) in Duraply and the overall balance is -526.06 kg CO<sub>2</sub> eq.

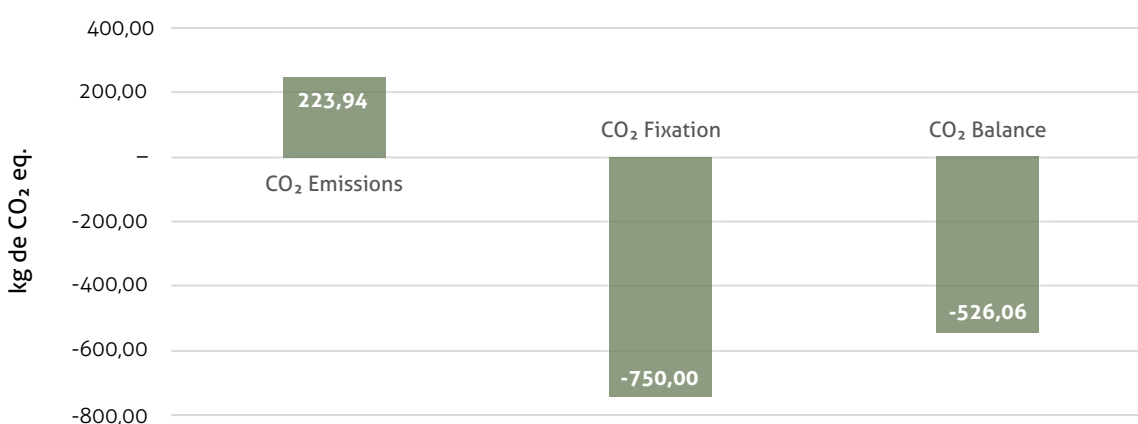
This calculation can also be performed based on a standard panel in order to know its environmental performance values in this impact category. The company's standard panel is understood as a panel with dimensions of 2500x1220x15 mm, and we calculate that: 1 unit of Duraply panels [A1+A2+A3] generates 10.24 kg of CO<sub>2</sub> per

unit. A total of 34.31 kg of CO<sub>2</sub> per unit is the biogenic carbon content (according to EN 16449) in Duraply panels and the overall balance is -24.06 kg CO<sub>2</sub> eq.

The CO<sub>2</sub> balance shows that manufacturing 1 m<sup>3</sup> of Duraprime panel [A1+A2+A3] generates 293.58 kg of CO<sub>2</sub> per m<sup>3</sup>. A total of 750,00 kg of CO<sub>2</sub> per m<sup>3</sup> is the biogenic carbon (according to EN 16449) in Duraprime panel and the overall balance is -456.42 kg CO<sub>2</sub> eq.

This calculation can also be performed based on a standard panel in order to know its environmental performance values in this impact category. The company's standard panel is understood as a panel with dimensions 2500x1220x15 mm, and we calculate that 1 unit of Duraprime board [A1+A2+A3] generates 13.43 kg of CO<sub>2</sub> per unit. A total of 34.31 kg of CO<sub>2</sub> per unit is the biogenic carbon content (according to EN 16449) in a Duraprime board and the overall balance is -20,88 kg CO<sub>2</sub> eq.

Figure 1. CO<sub>2</sub> Balance in Garnica Duraply raw panel







# Verification

This verification has been made under PCR 2012:01 Construction products and Construction services v2.33 and the Environdec´s Program General Instructions.

The declaration is complete and contains:

- *Product definition and physical data related to manufacturing.*
- *Details of inputs and their origin.*
- *Description of how the product is manufactured.*
- *Data on the conditions of use, and the final phase of life.*
- *Results of the evaluation of the life cycle.*
- *Evidence, verification and testing.*

Independent verification according to ISO 14025:2006

EPD process certification

EPD verification

Procedure for follow-up of data during EPD validity involves third party verifier:

Yes

No

Third party verifier:

Anxo Mourelle-Álvarez

EPD International Verifier - Spain

Signature:



## EPD

Programme: The International EPD System  
[www.environdec.com](http://www.environdec.com)

Programme operator: EPD International

EPD registration number: S-P-05372

Registration date: 2022-01-14

Revision date: 2022-07-07

Validity: 2026-12-26

Geographical scope: Global

## EPD OWNER

GRUPO GARNICA PLYWOOD S.A.U.

Web: [www.garnica.one](http://www.garnica.one)

E-mail: [quality@garnica.one](mailto:quality@garnica.one)

Complete report:



# garnica

Challenge the ordinary